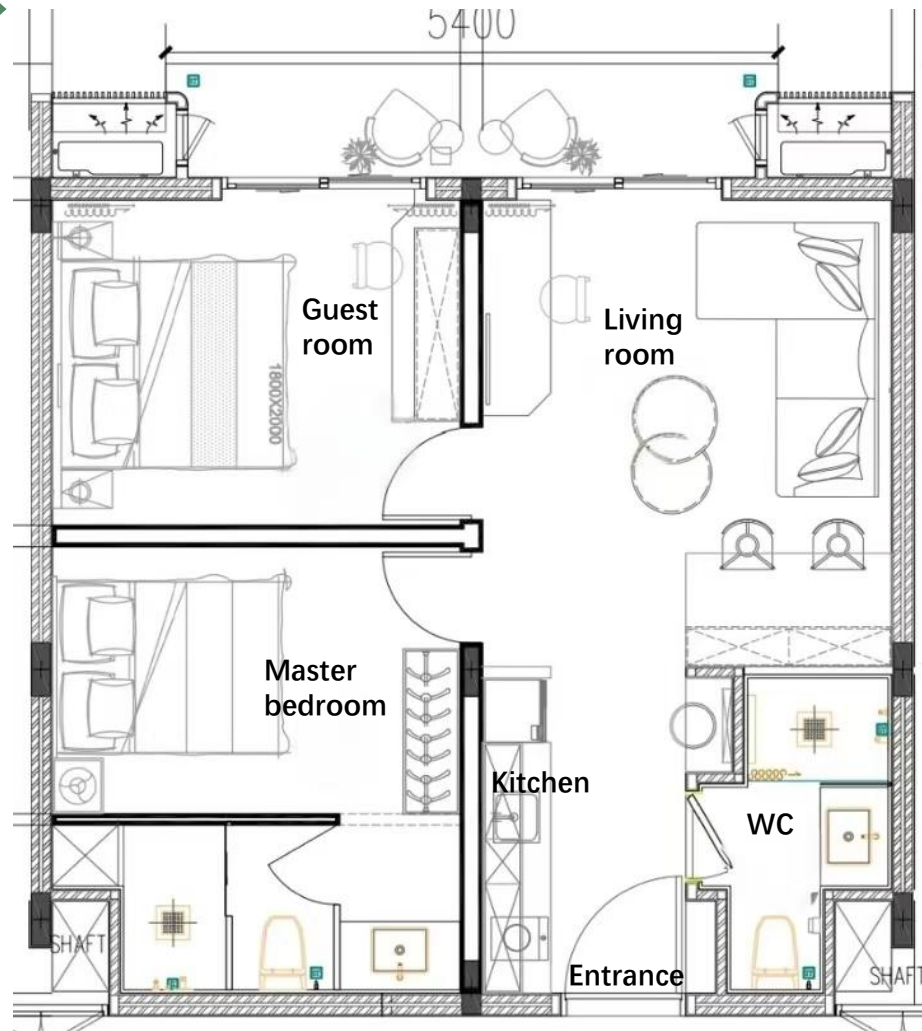


2BR unit proposal

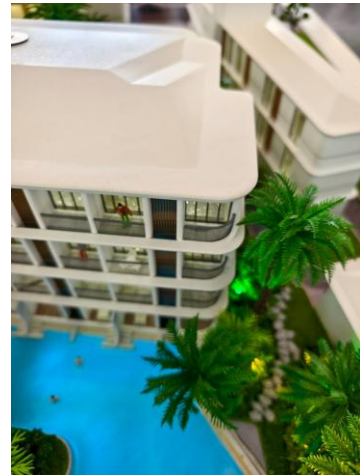


Anava Samui

Floorplan



2BR-Block C



Unit number C310+C312

Unit Size 58.38m²

Price Leasehold 7,011,867THB
Freehold 7,801,164THB

Transfer date 30/12/2026~15/04/2027

View Pool view

Unit level 3

2BR-Block F



Unit number F201+F202

Unit Size 75.75m²

Price Leasehold 8,106,566THB
Freehold 9,002,916THB

Transfer date 30/12/2026~15/04/2027

View Pool view

Unit level 2

2BR-Block F



Unit number F410+F411

Unit Size 68.9m²

Price Leasehold 8,494,772THB
Freehold 9,354,664THB

Transfer date 30/12/2026~15/04/2027

View Pool view

Unit level 4





Conclusion

- Given that you mentioned you prefer buildings located toward the back, I have selected Blocks C and F. Among them, the units in Block C offer better views of the swimming pool, while Block F provides more privacy and features a more varied landscape.
 - Although I recommend units on the 2nd or 4th floor, you're welcome to choose a different floor if you have a preference — other floors are also available.
 - Since the units in Block C are smaller, the prices are lower. In fact, it's a classic case of "you get what you pay for" — the more you're willing to spend, the larger the unit or the higher the floor you can get.
- 