



PHENOMENON. CONDOMINIUM WITH SEA VIEW IN THE KATA AREA

EXCLUSIVE | PRE-SALE

Main characteristics of the project | Infrastructure | Advantages of the location | Available apartments



📍 KATA BEACH, PHUKET

Phenomenon

Condominium on Kata beach

EXCLUSIVE | PRE-SALE

5.365.000 THB

The starting price of the apartment

37 sq.m

Apartment area

7% FOR 3 YEARS

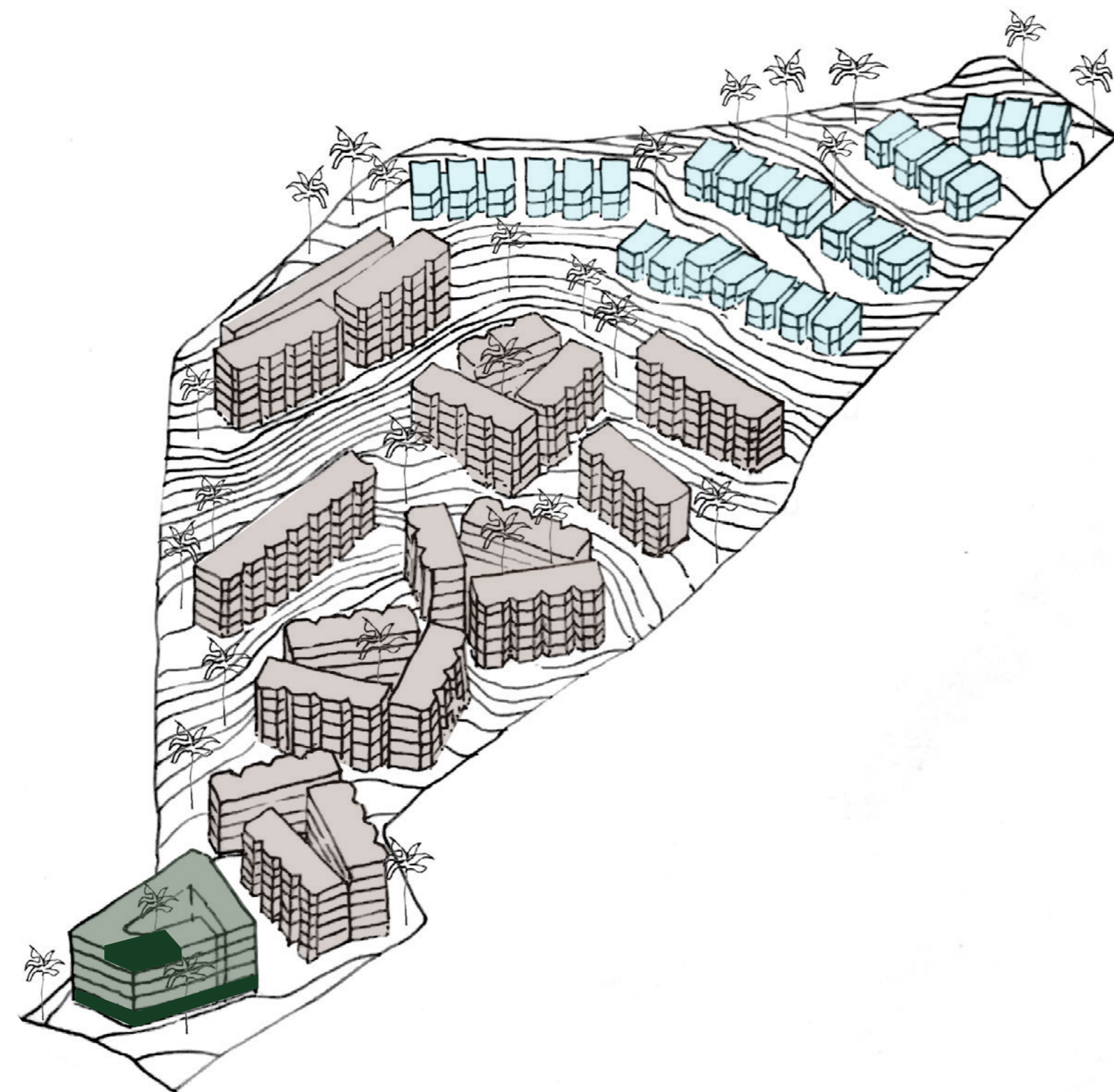
Fixed income option in case of 100% payment,
the program starts after handover

2Q 2026

Handover

- 390 apartments
- Located on a steep hill in the Kata area with lush landscape and sea view
- 80% of the apartments with diagonal sea view
- Public spaces and underground parking
- Installement - 50% down payment





- Condominium buildings
- Townhouses
- Hotel
- Supermarket, restaurant, coffee place, rooftop bar

📍 KATA BEACH, PHUKET

Phenomenon

Condominium on Kata beach

390 APARTMENTS - STUDIO

8 buildings with unique design, inscribed into natural contours of green hills

27 TOWNHOUSES

On a hilltop with an unobstructed view

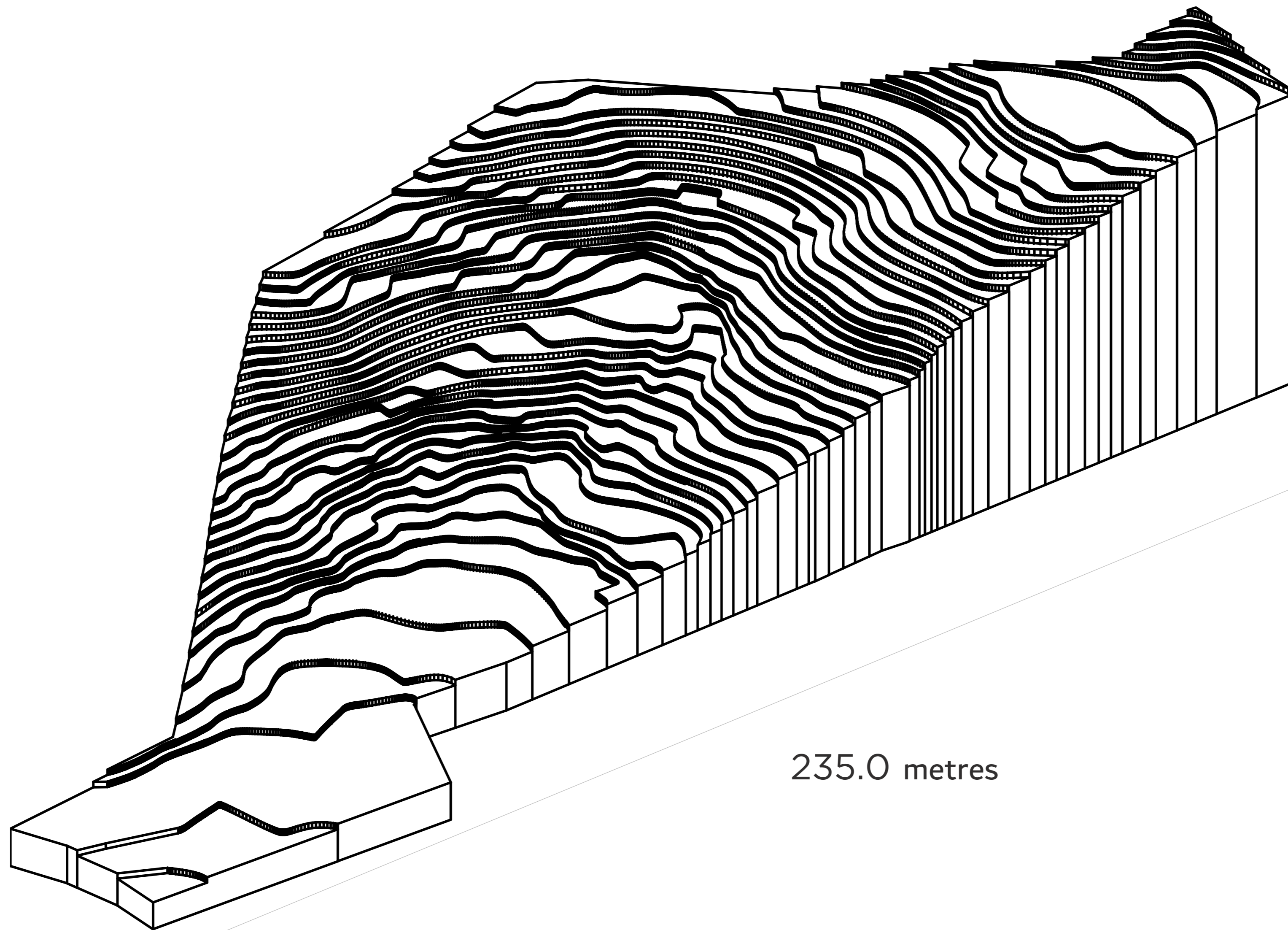
The complex includes pools, hotel, supermarket, restaurant, rooftop bar, cafe and underground parking.







5.0 metres
Above the sea level



235.0 metres

59.0 metres
Above the sea level



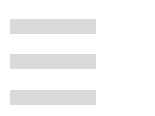
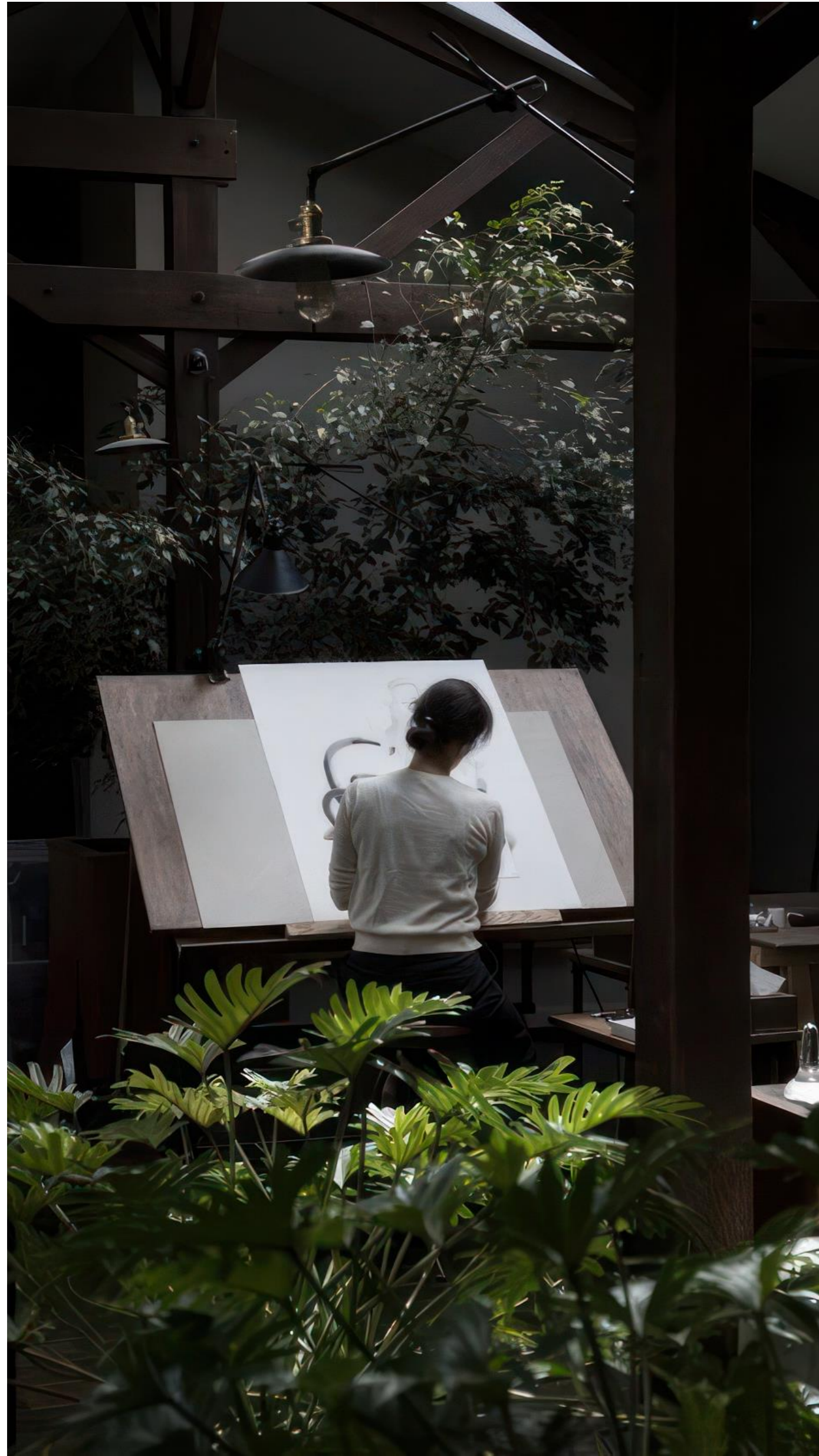


13.800
SQ.M

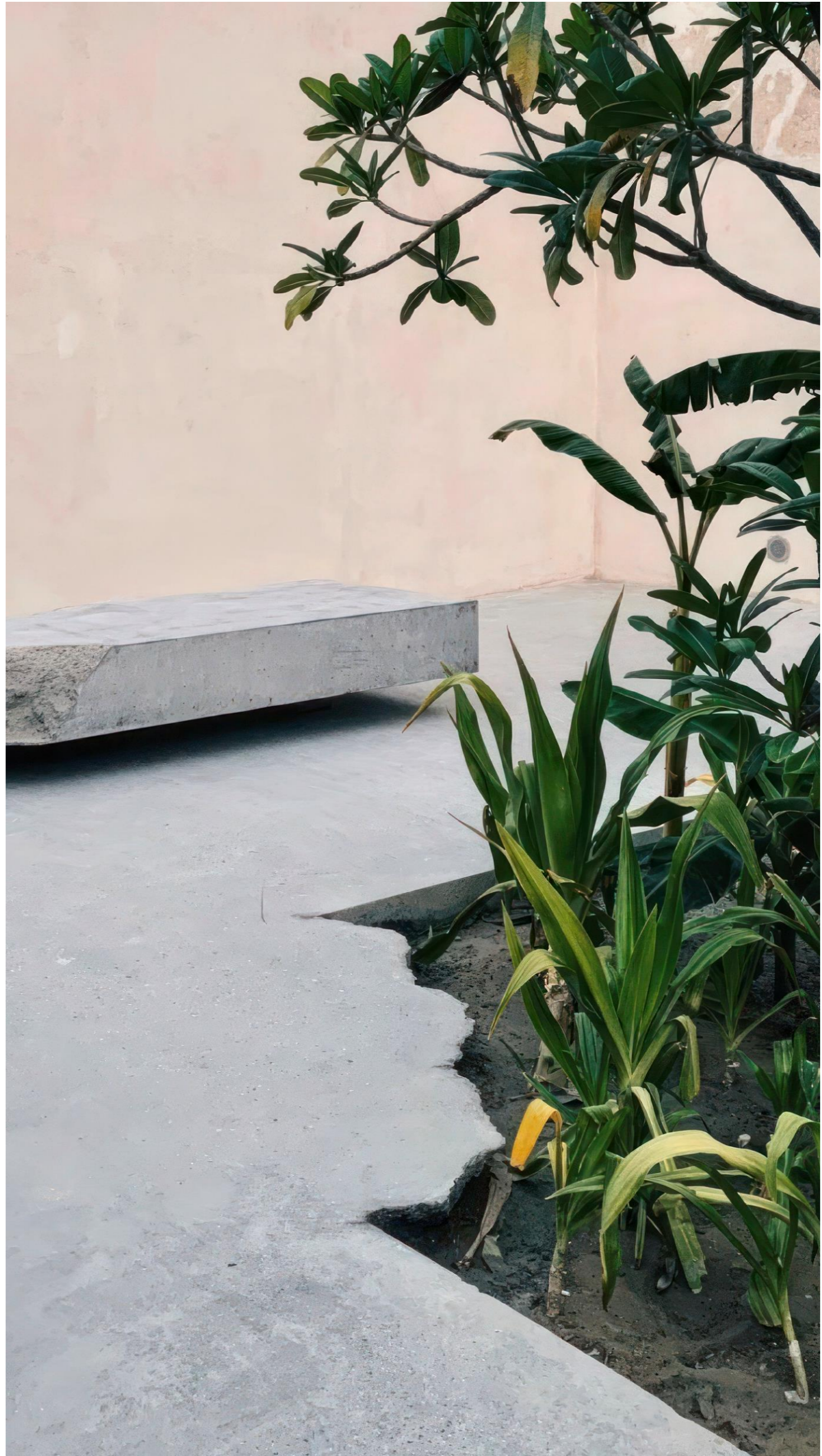












Sea view



Mountain view





B
BUILDING
PHENOMENON



15



Landscape design



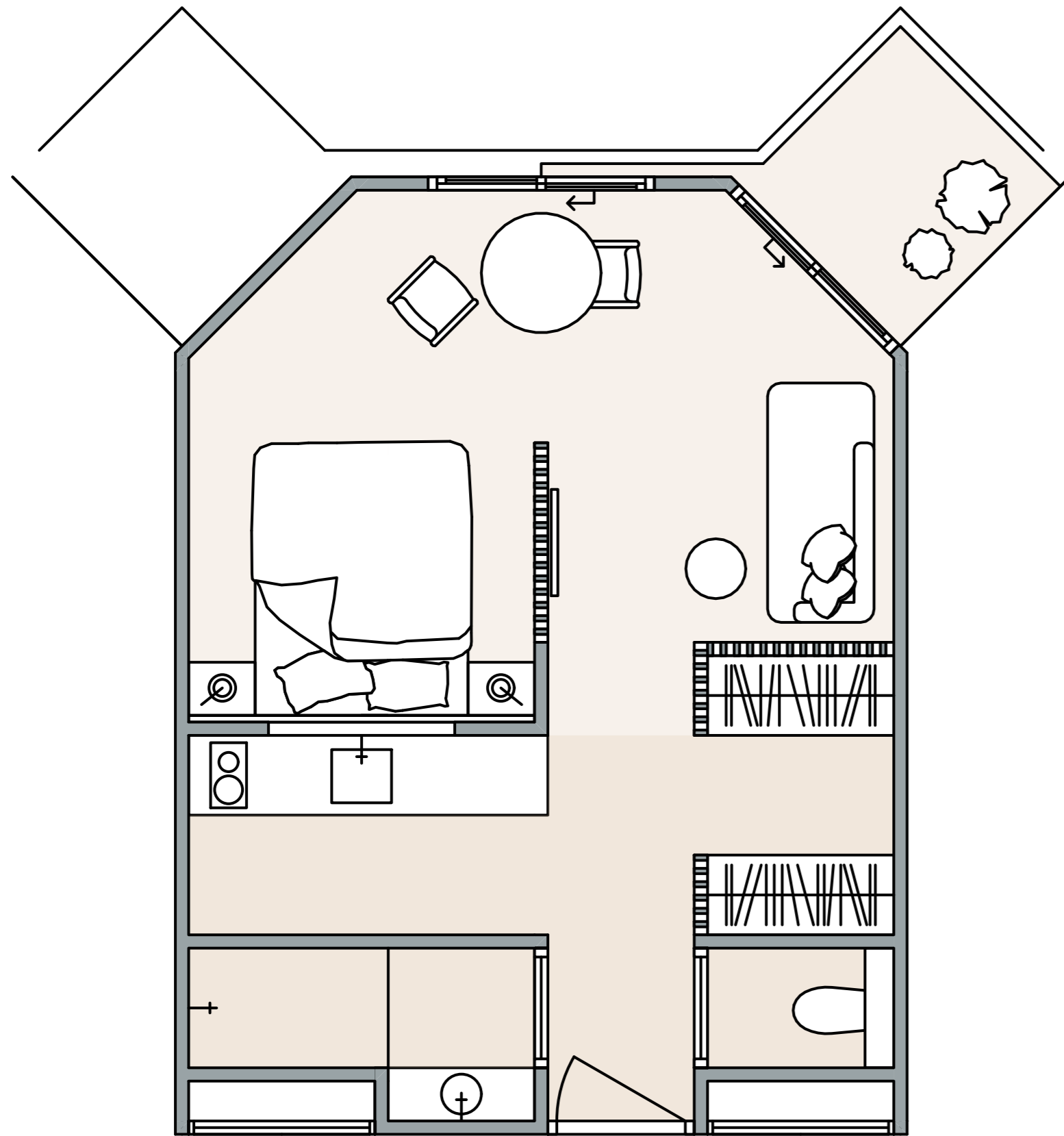
Open corridors with mansard window



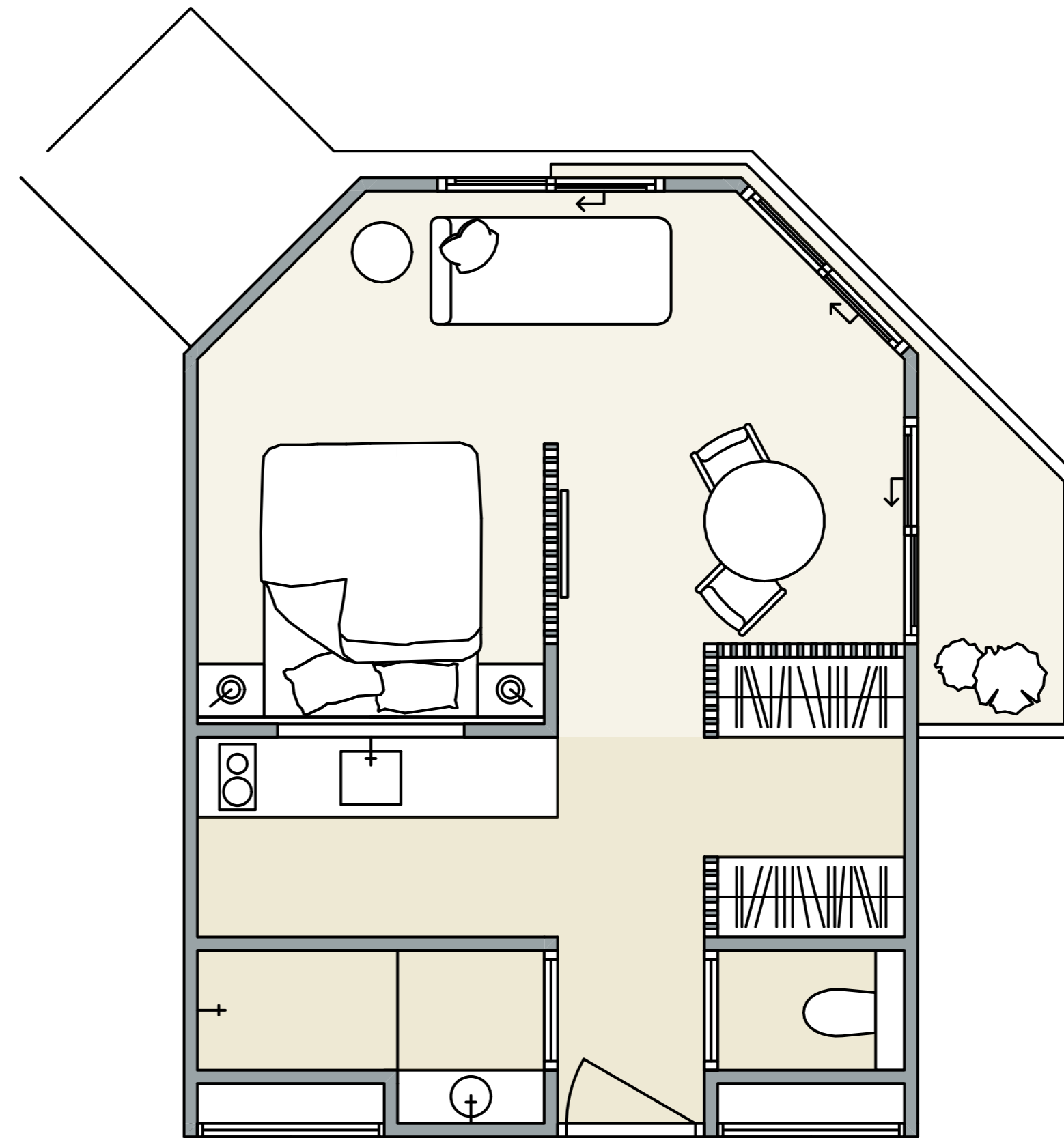
■ Ocean view from mansard floor



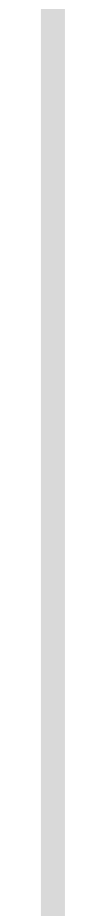
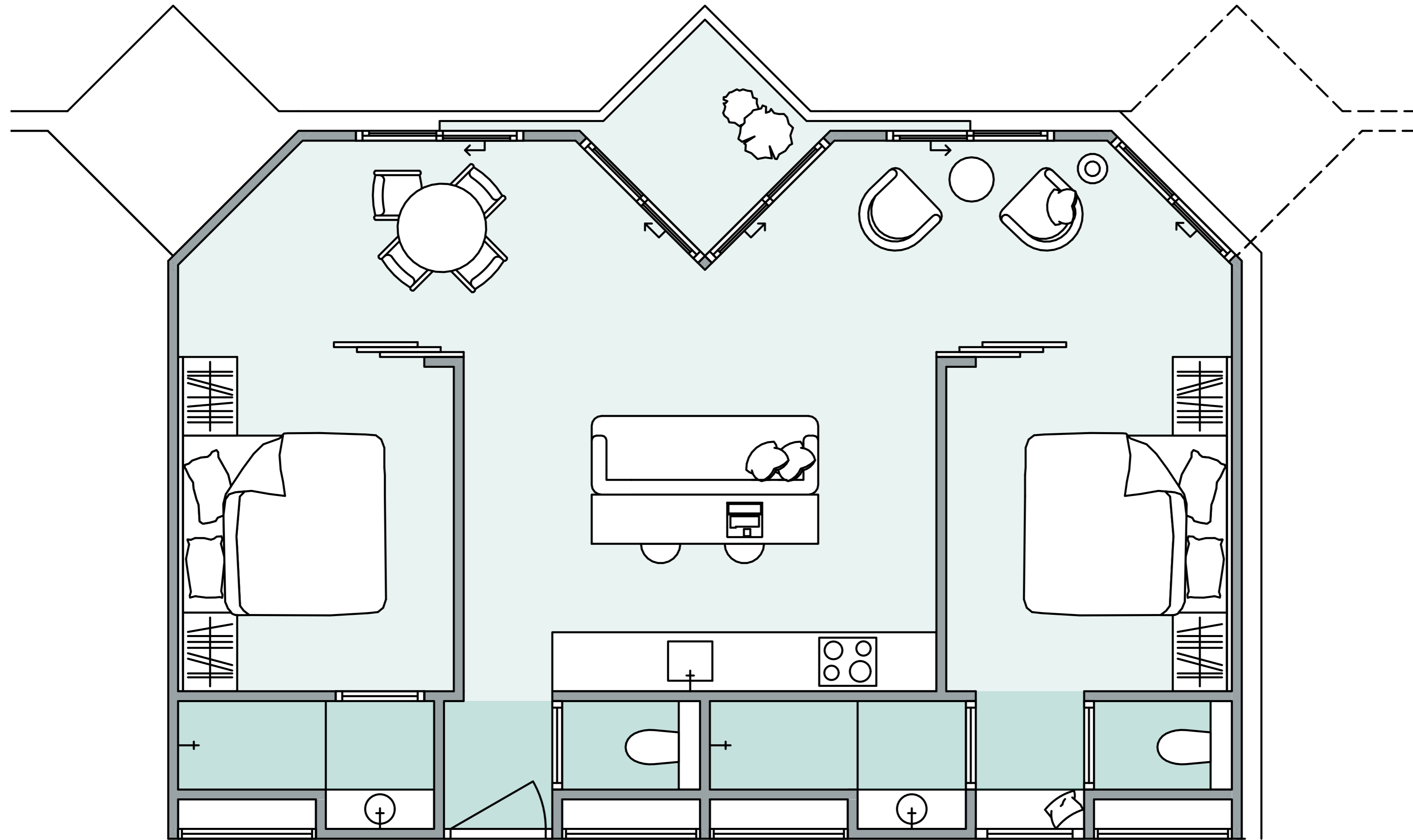
Type A. Studio



Type B. Studio with side window and additional balcony



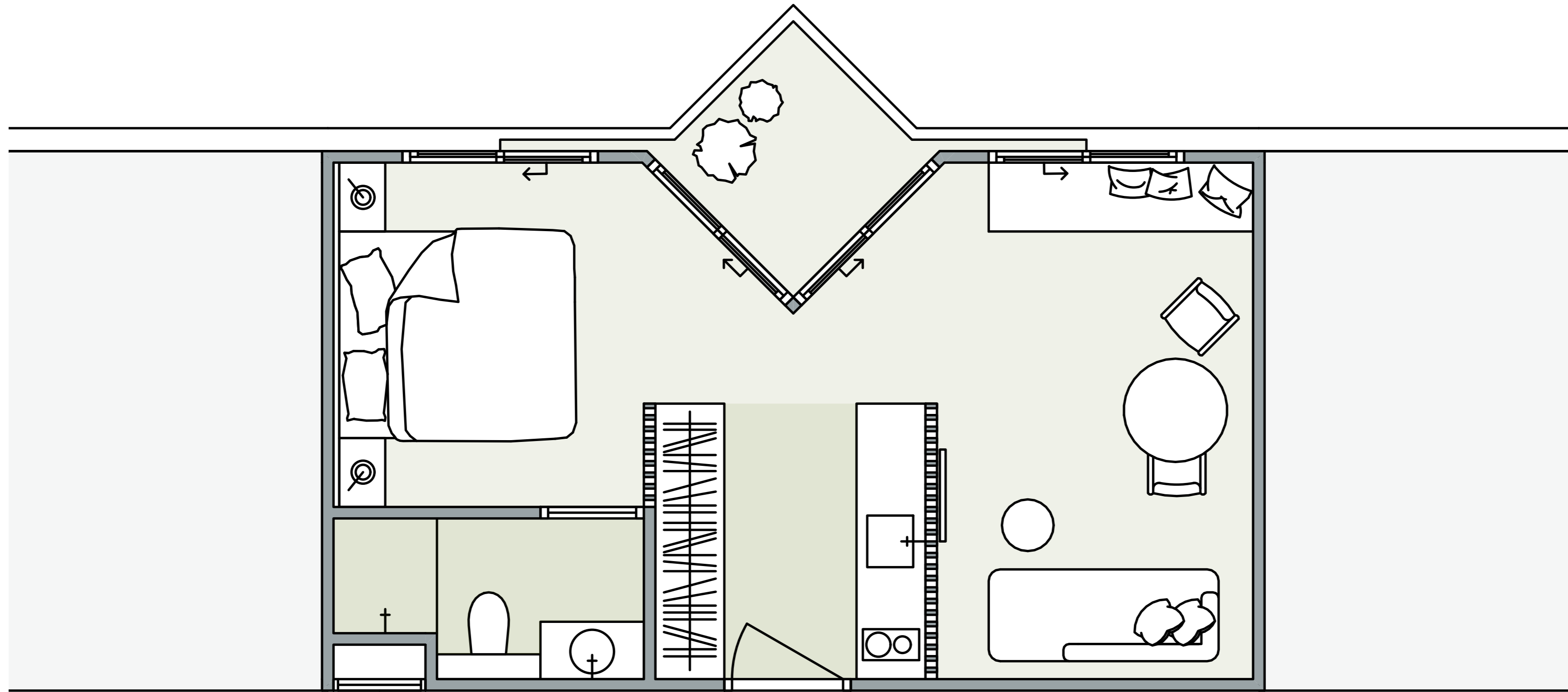
The option of combining 2 studios



20



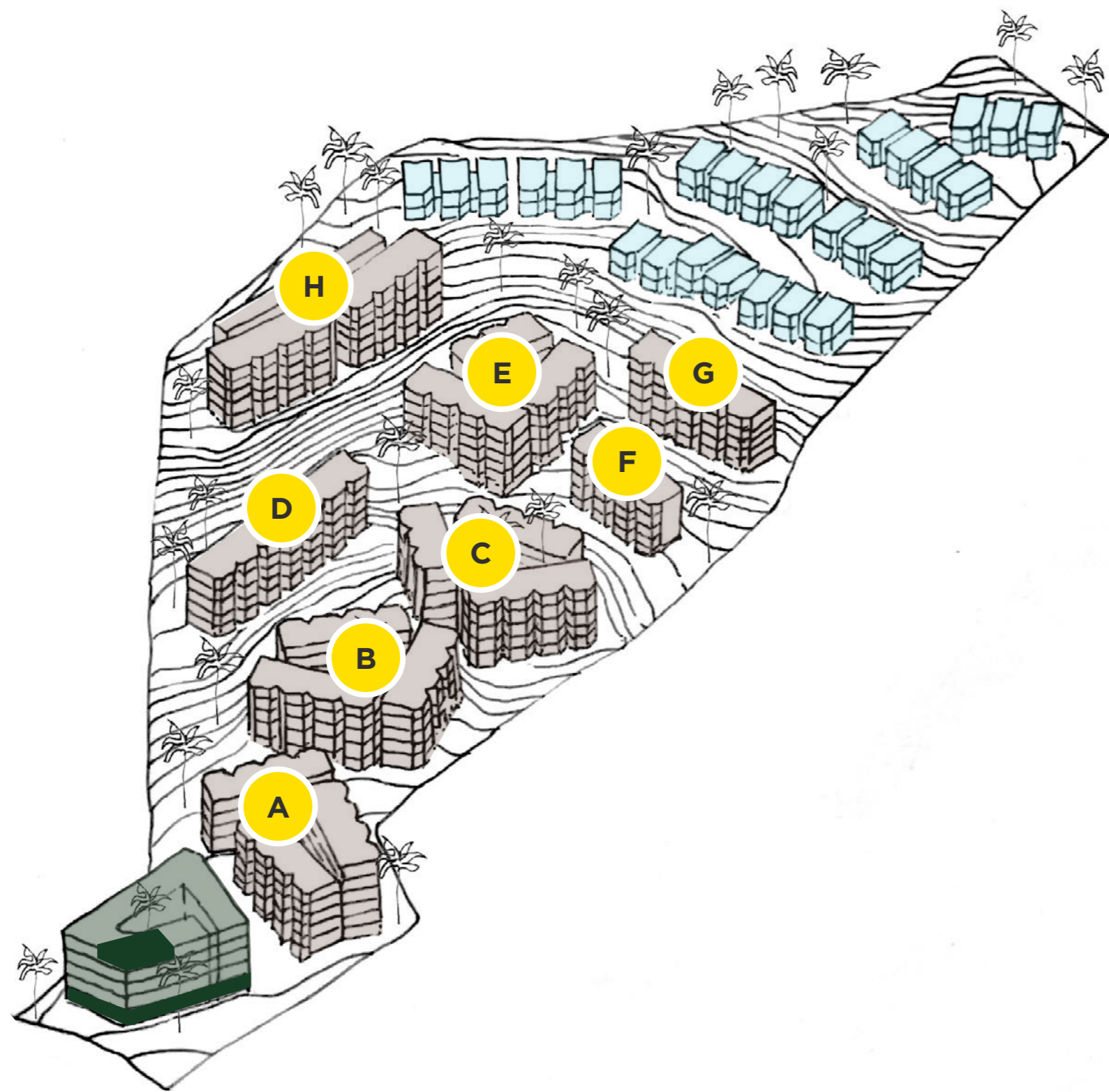
Type D. One-bedroom apartment



Floor plan

■ Phenomenon. Sea view condominium in the Kata area





- Condominium buildings
- Townhouses
- Hotel
- Supermarket, restaurant, coffee place, rooftop bar

Building	Building type	Apartments
A	Condominium	56
B	Condominium	55
C	Condominium	51
D	Condominium	35
E	Condominium	41
F	Condominium	20
G	Condominium	25
H	Condominium	52
I - W	Terraced Duplex	54
Apartments		389
Hotel	Hotel	48



A
BUILDING
FLOOR 1



24



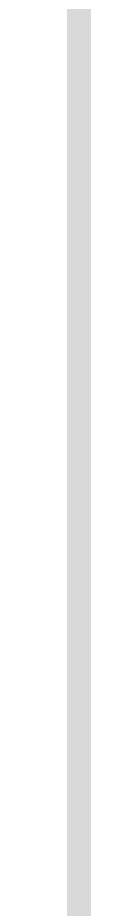
A
BUILDING
FLOOR 2



25



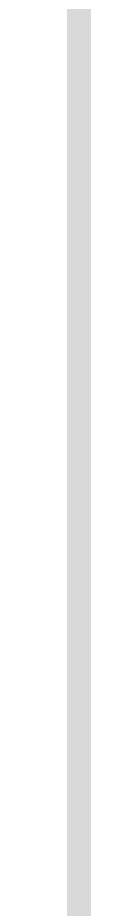
A
BUILDING
FLOOR 3



26



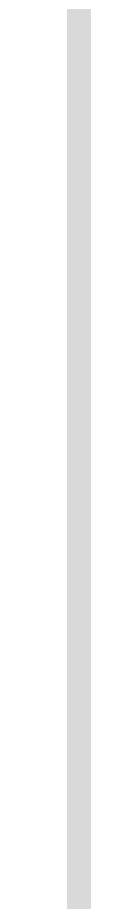
A
BUILDING
FLOOR 4



27



A
BUILDING
FLOOR 5



28



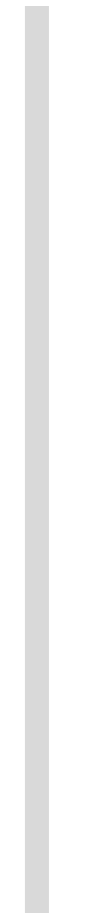
B
BUILDING
FLOOR 1



29



B
BUILDING
FLOOR 2



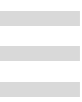
30



B
BUILDING
FLOOR 3



31



B
BUILDING
FLOOR 4



32



B
BUILDING
FLOOR 5



33





C
BUILDING
FLOOR 1

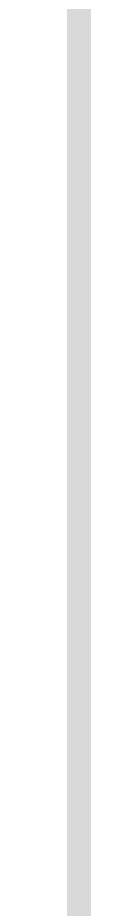


34





C
BUILDING
FLOOR 2

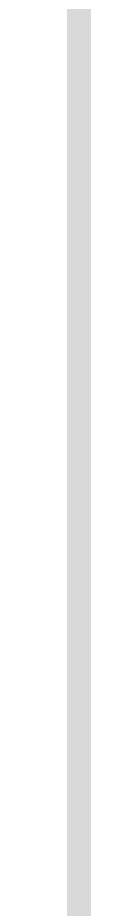


35





C
BUILDING
FLOOR 3



36





C
BUILDING
FLOOR 4

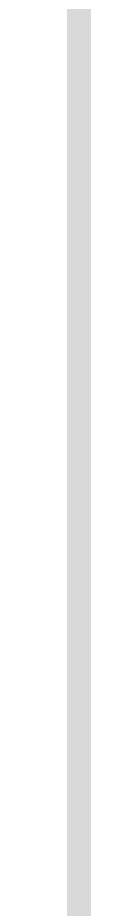


37



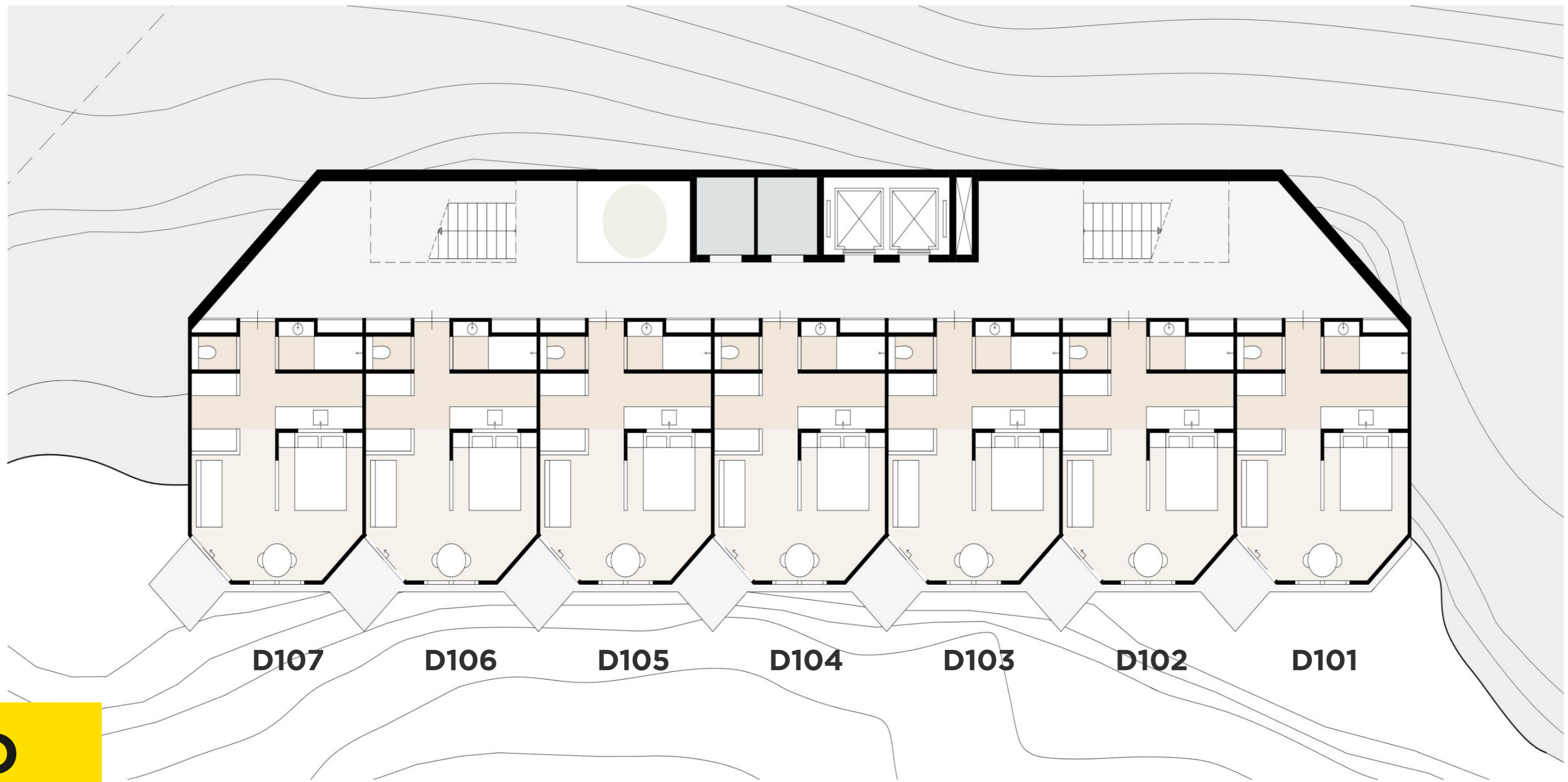


C
BUILDING
FLOOR 5



38





D
BUILDING
FLOOR 1

D107

D106

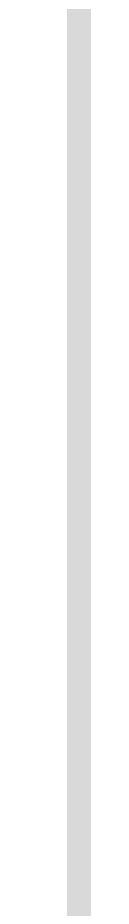
D105

D104

D103

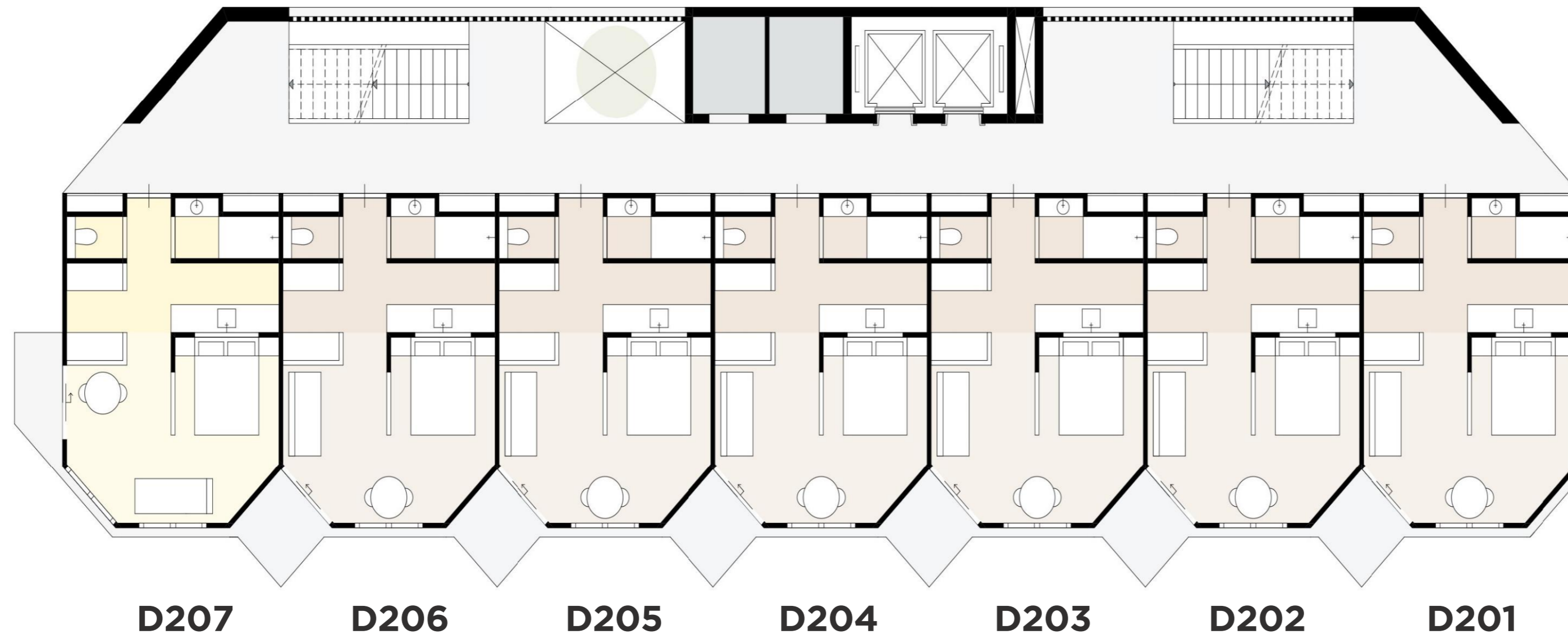
D102

D101

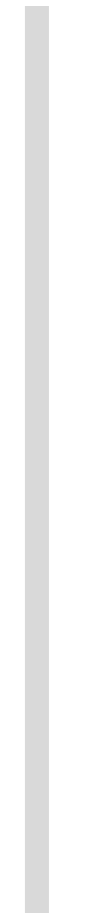


39



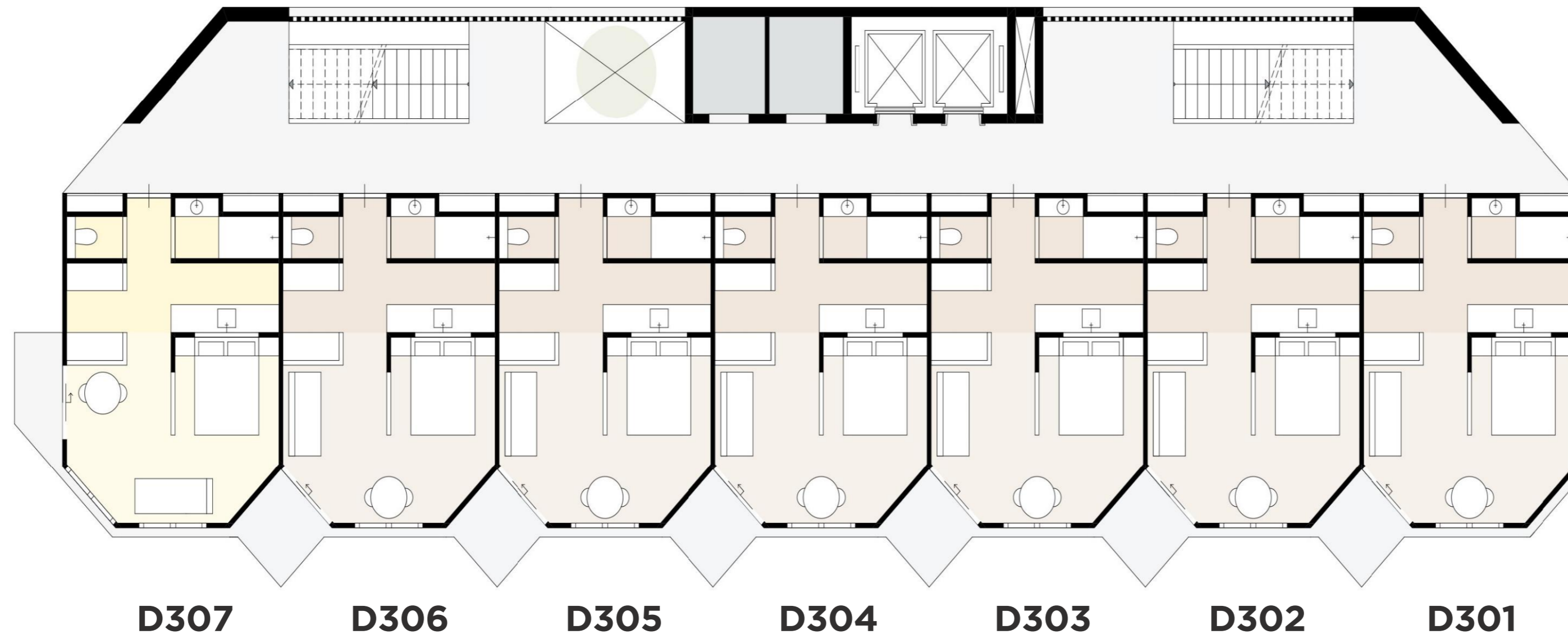


D
BUILDING
FLOOR 2



40





D307

D306

D305

D304

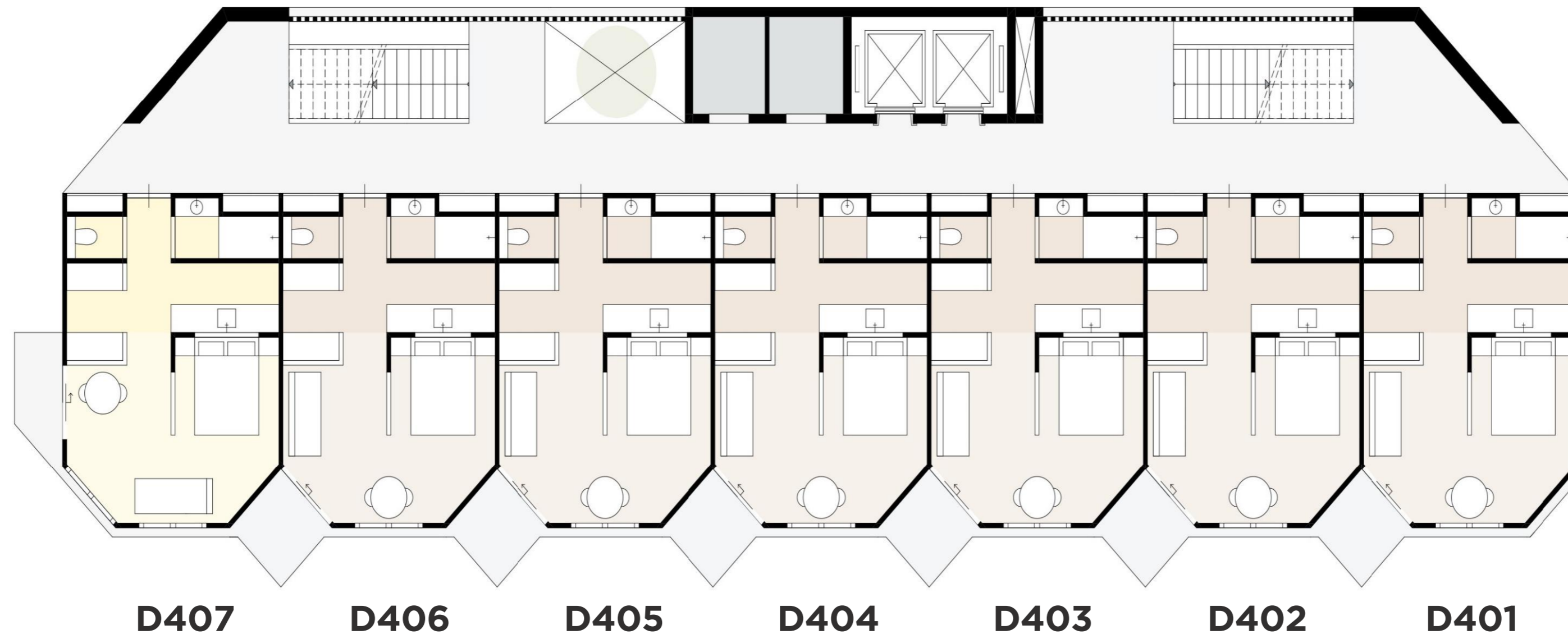
D303

D302

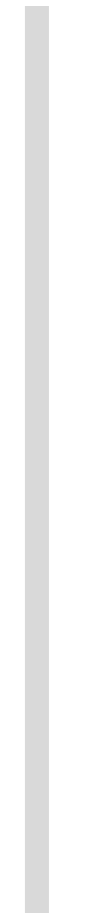
D301

D
BUILDING
FLOOR 3



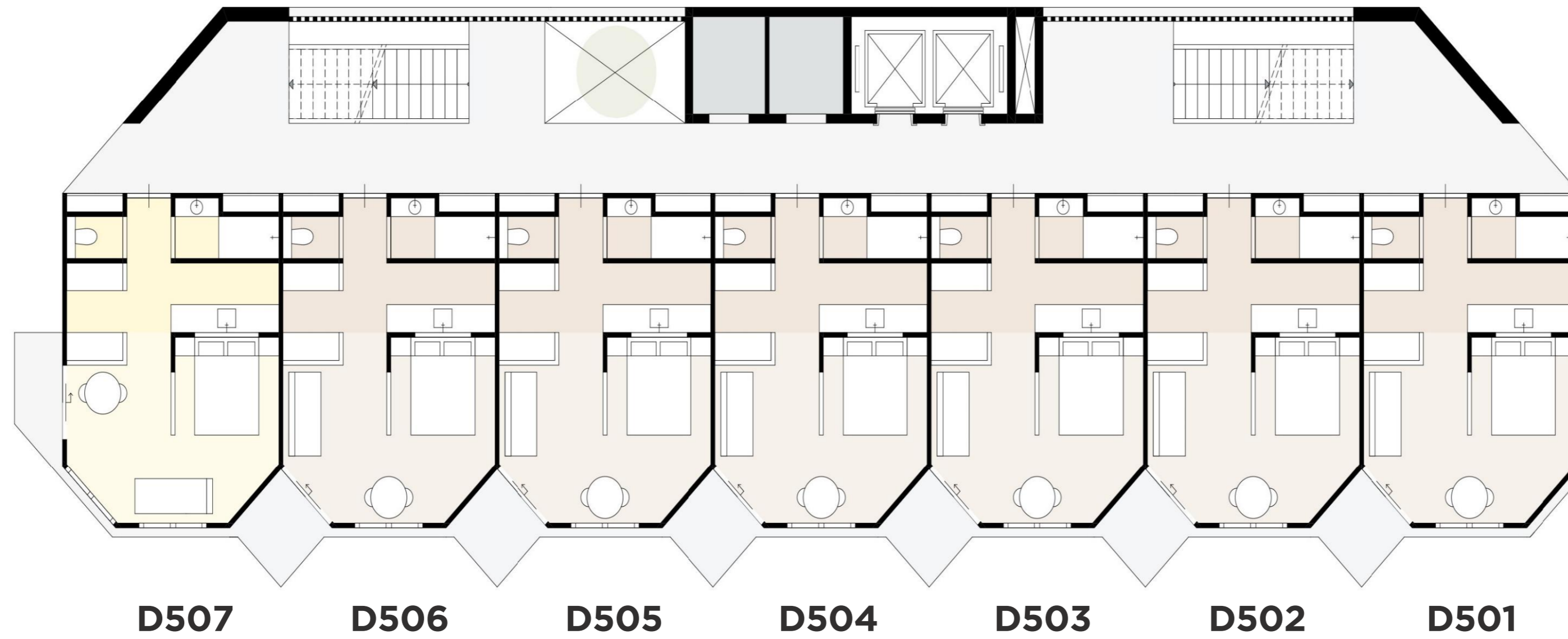


D
BUILDING
FLOOR 4



42





D507

D506

D505

D504

D503

D502

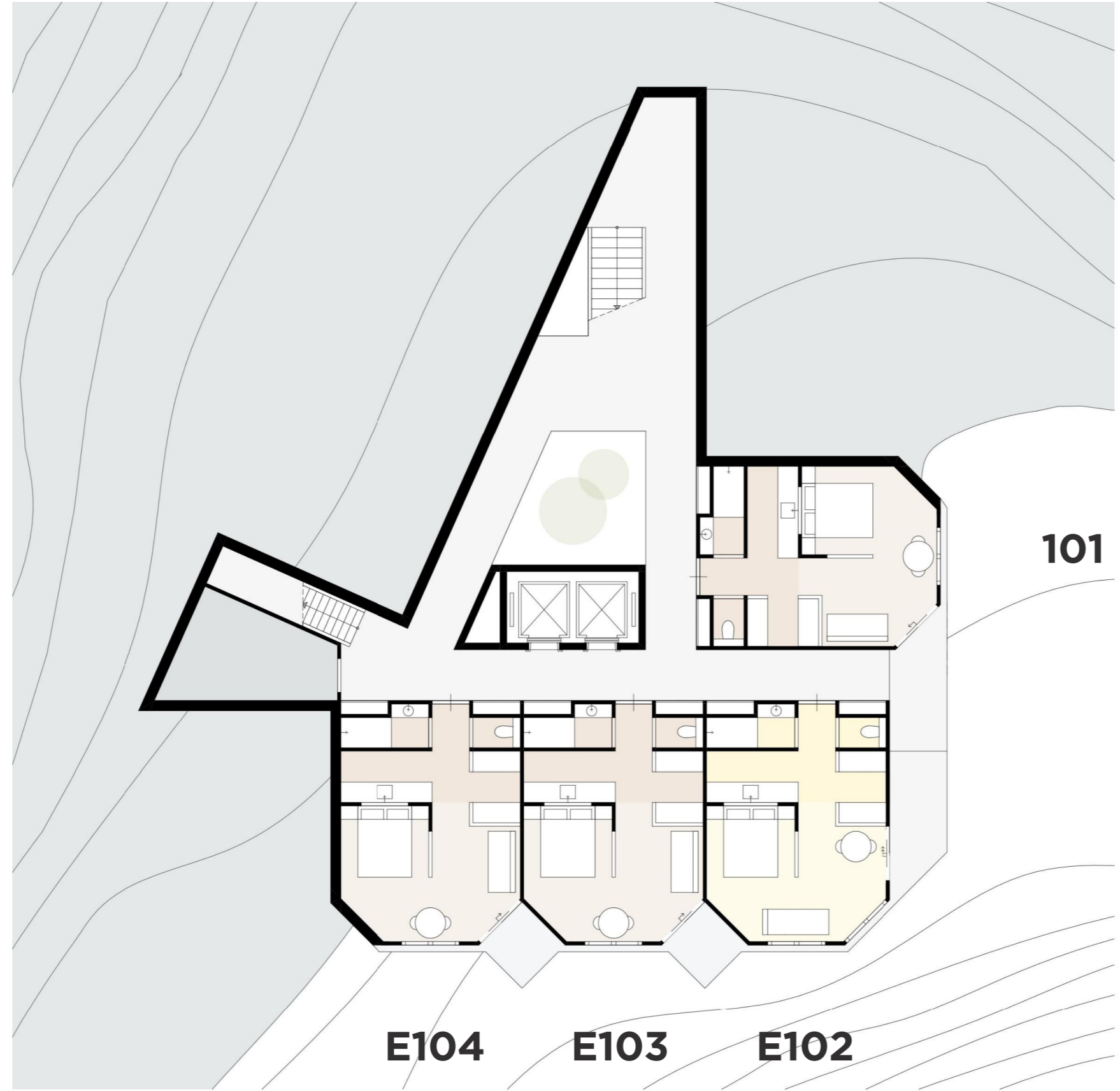
D501

D
BUILDING
FLOOR 5

43



E
BUILDING
FLOOR 1



44



E
BUILDING
FLOOR 2



45



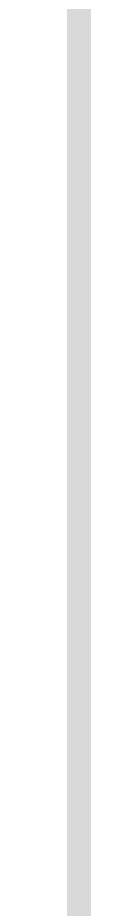
E
BUILDING
FLOOR 3



46



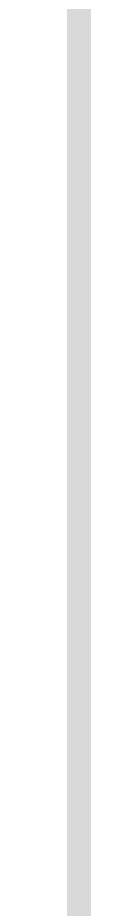
E
BUILDING
FLOOR 4



47

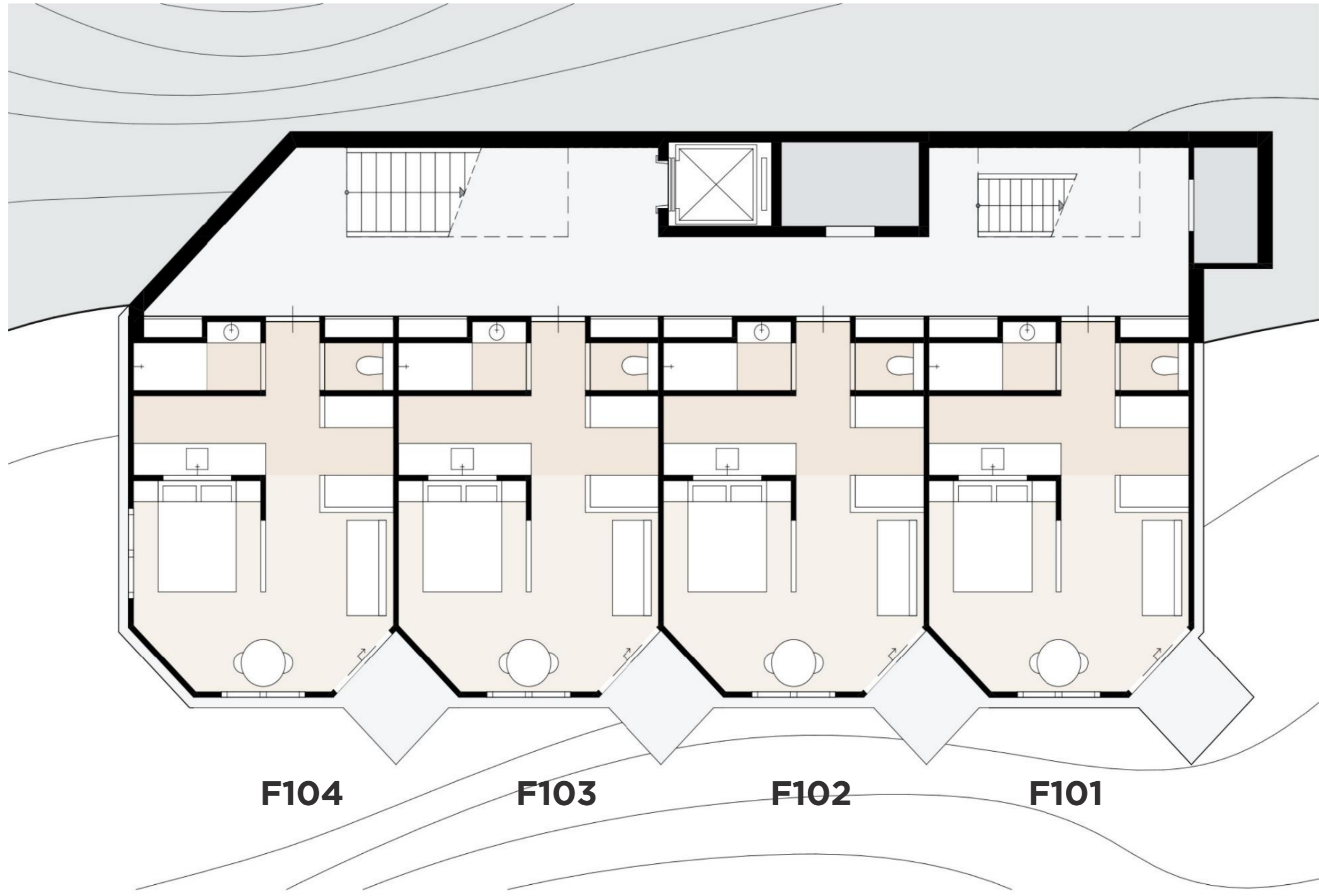


E
BUILDING
FLOOR 5



48

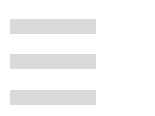


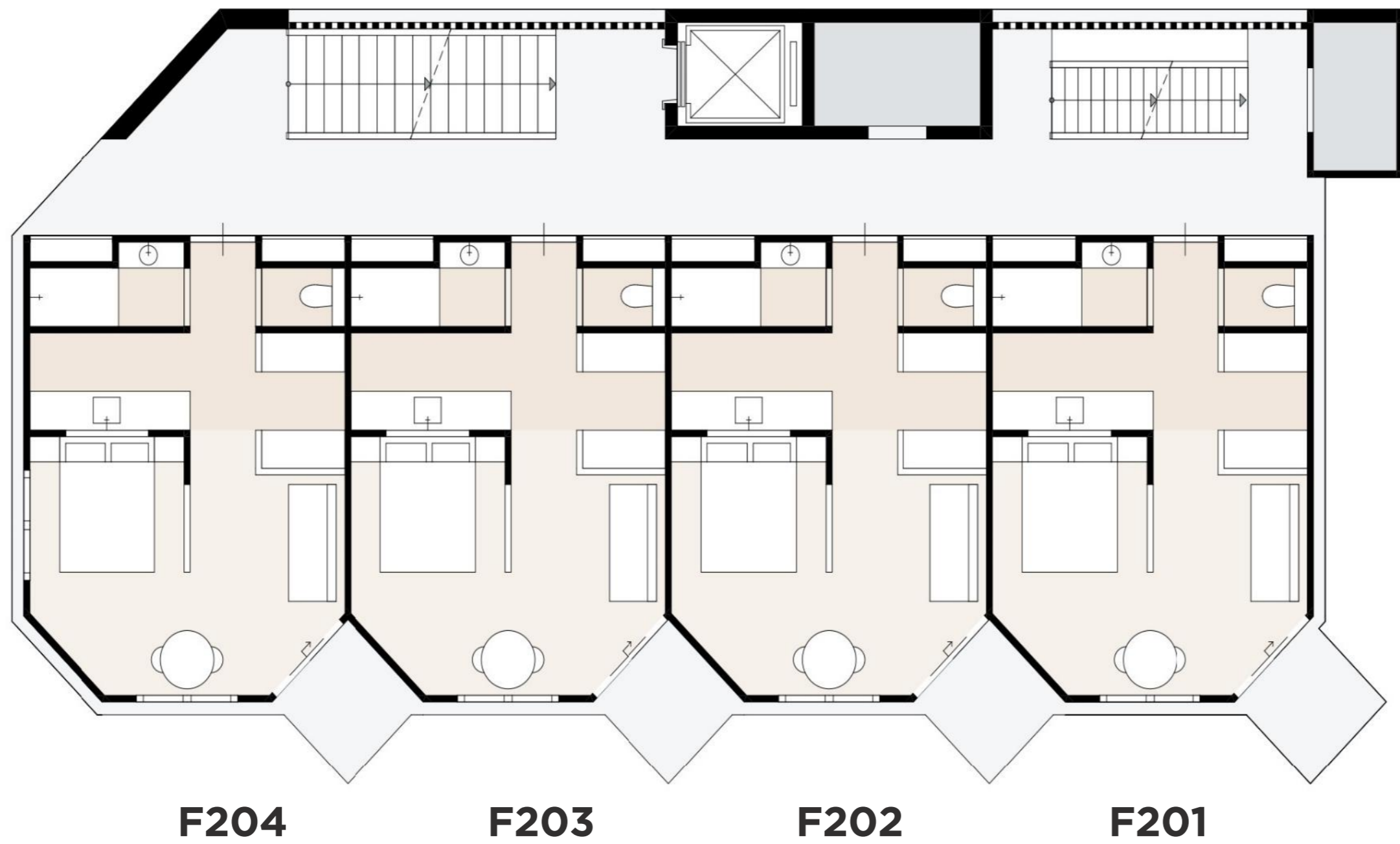


F
BUILDING
FLOOR 1



49

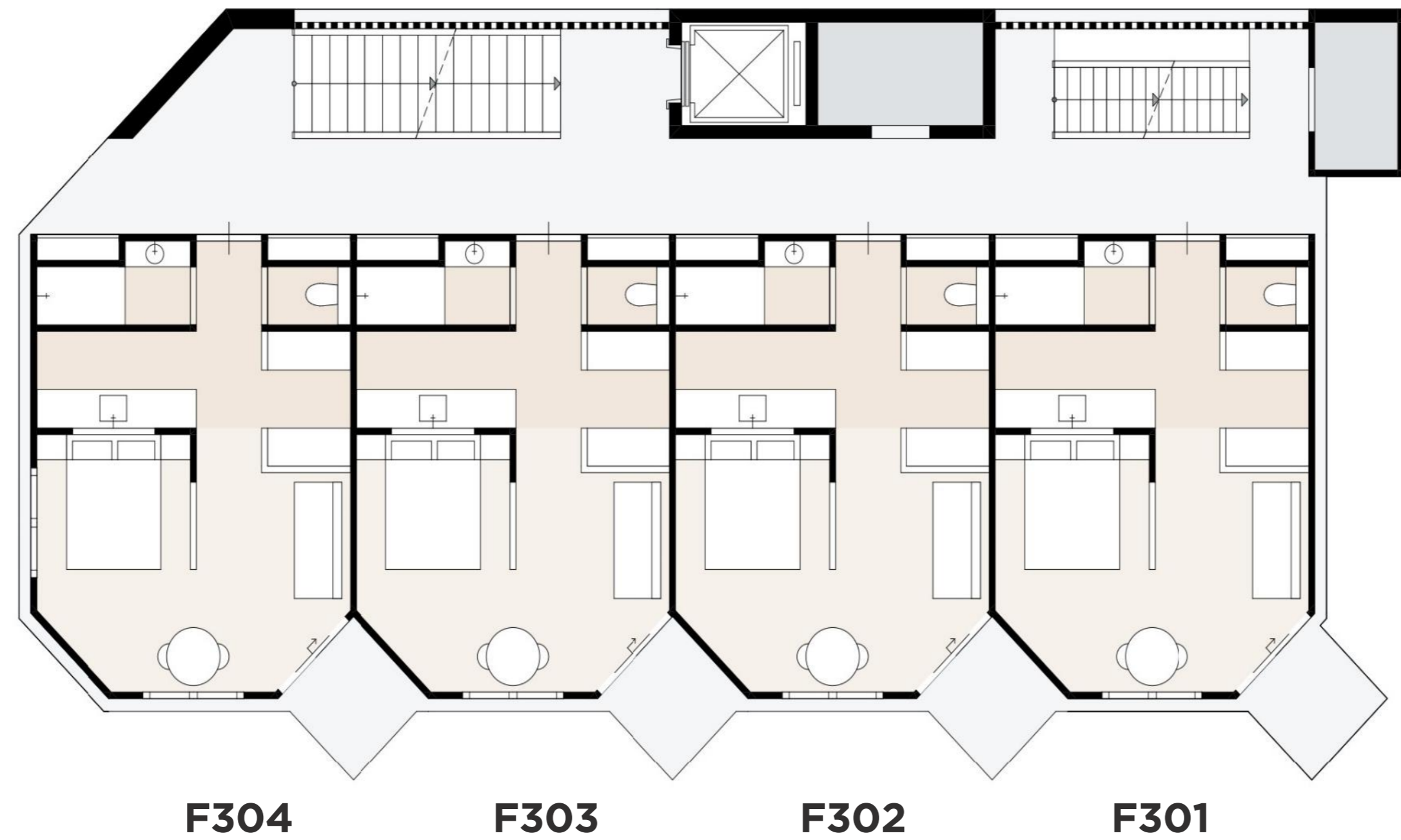




F
BUILDING
FLOOR 2

50



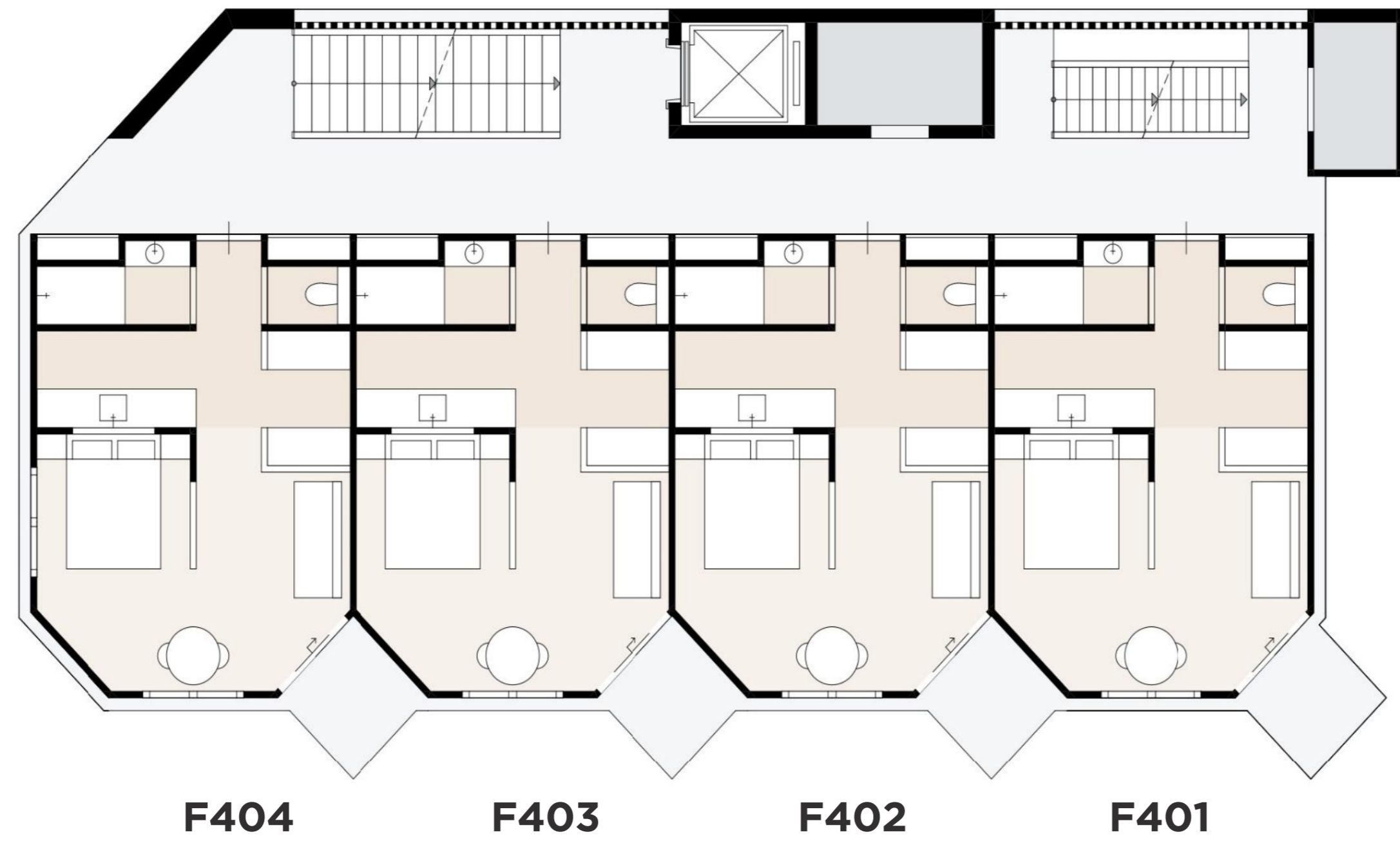


F
BUILDING
FLOOR 3



51



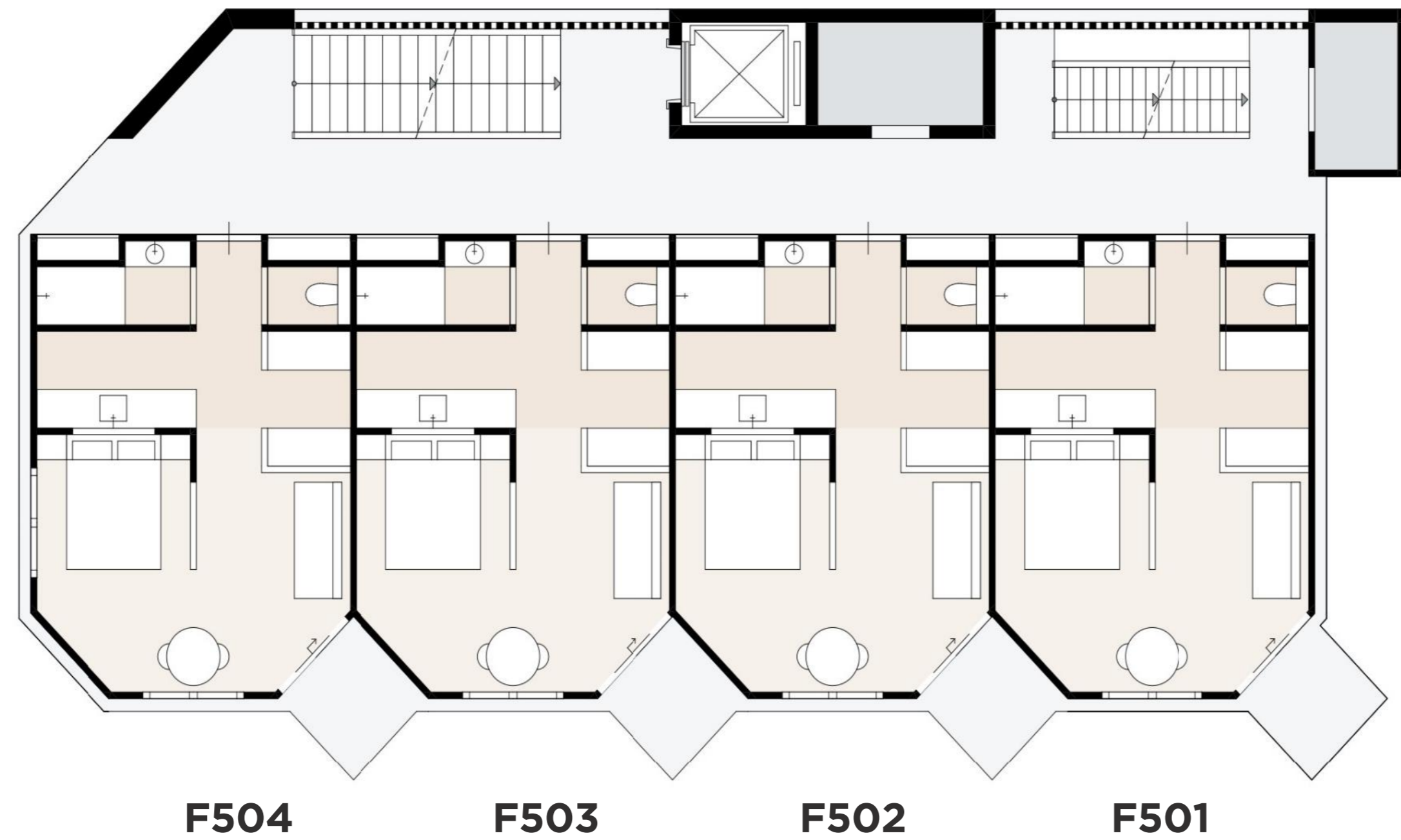


F
BUILDING
FLOOR 4

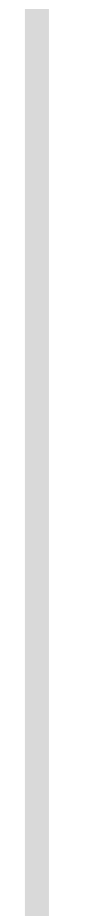


52





F
BUILDING
FLOOR 5

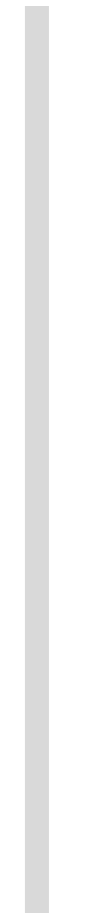


53



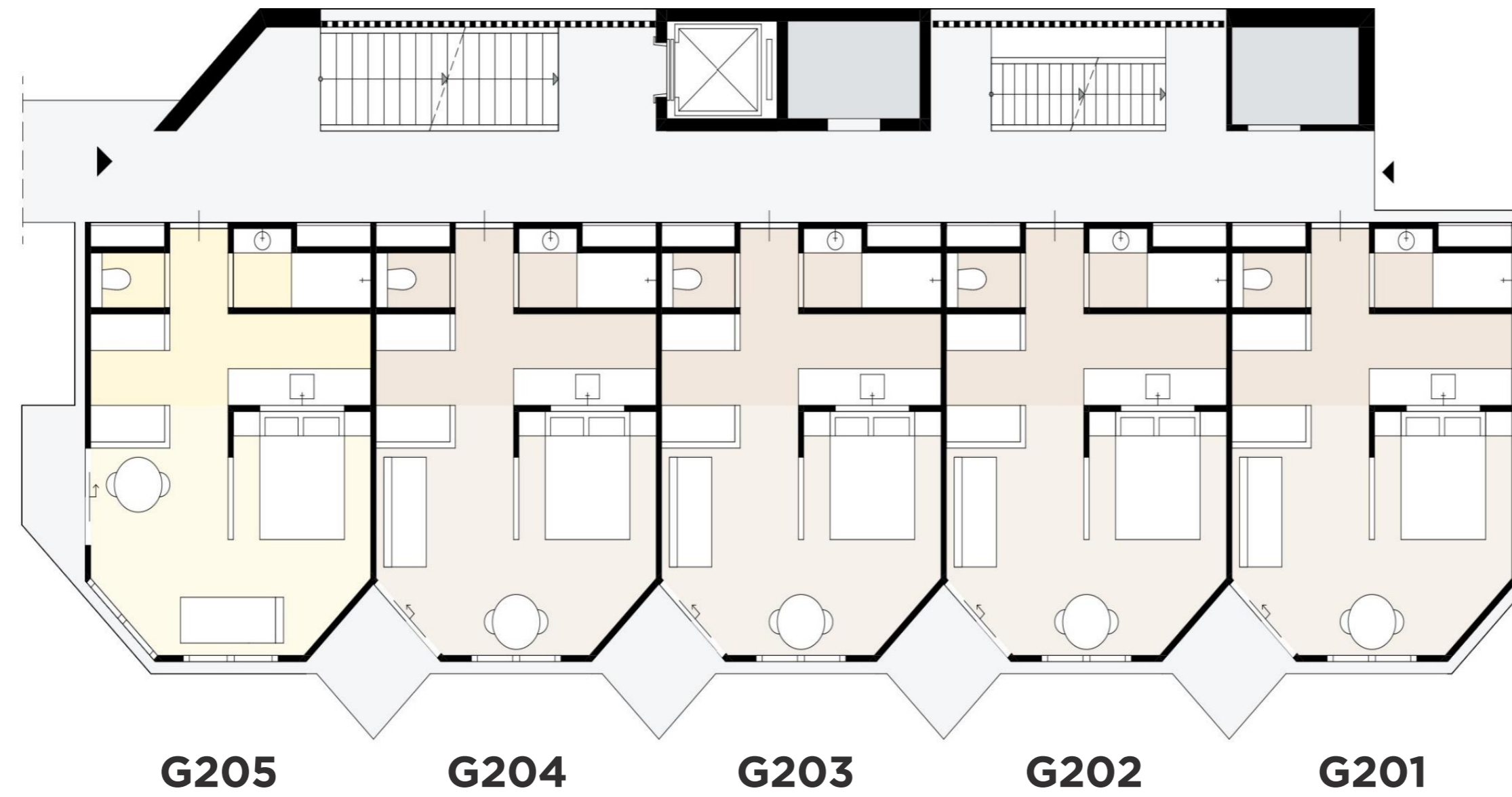


G
BUILDING
FLOOR 1

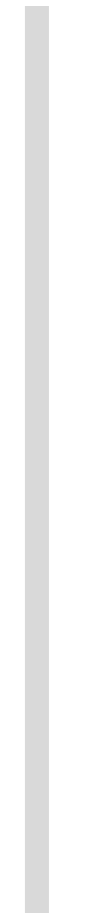


54



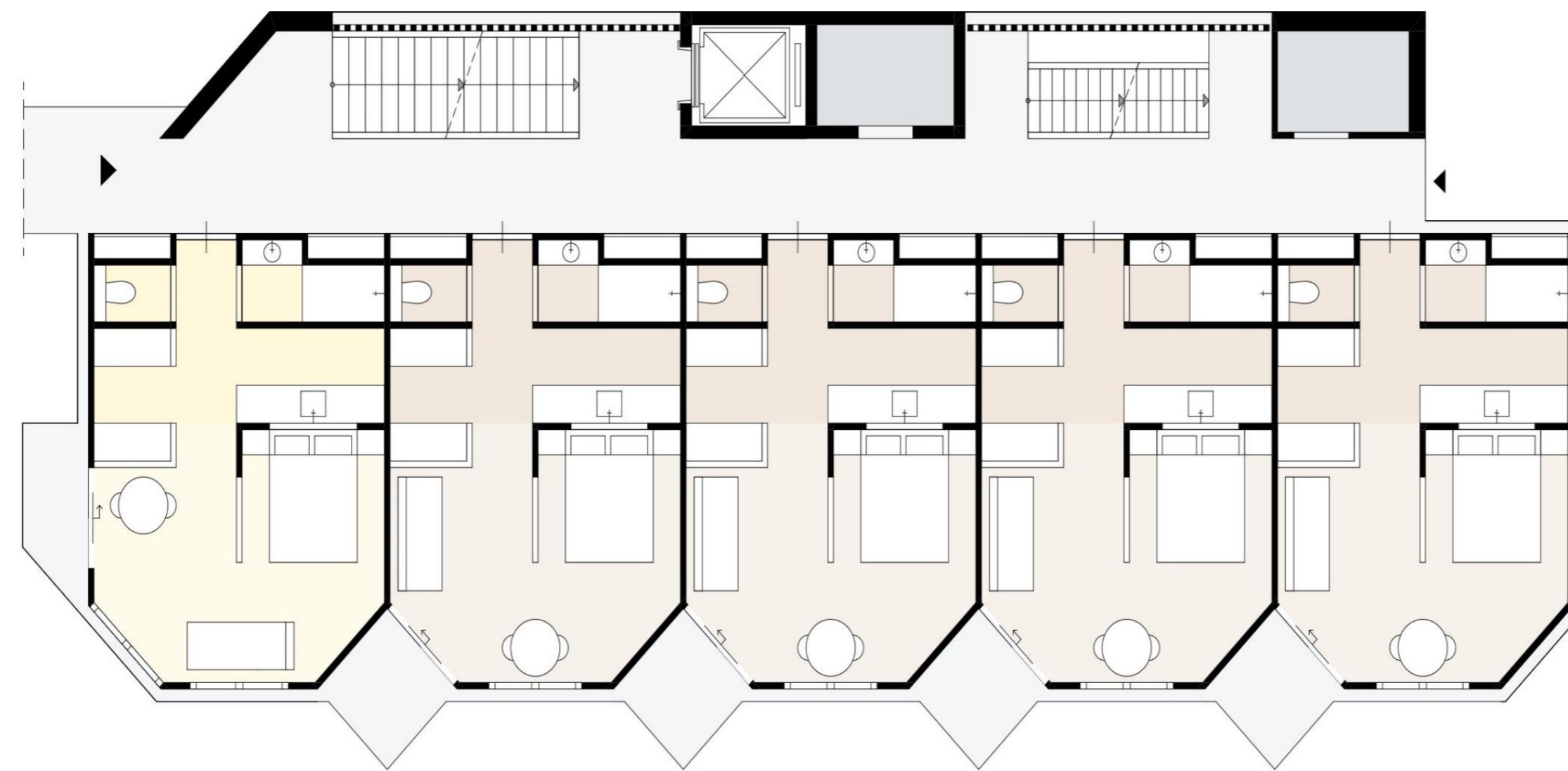


G
BUILDING
FLOOR 2



55





G305

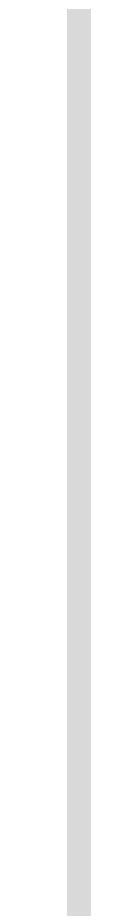
G304

G303

G302

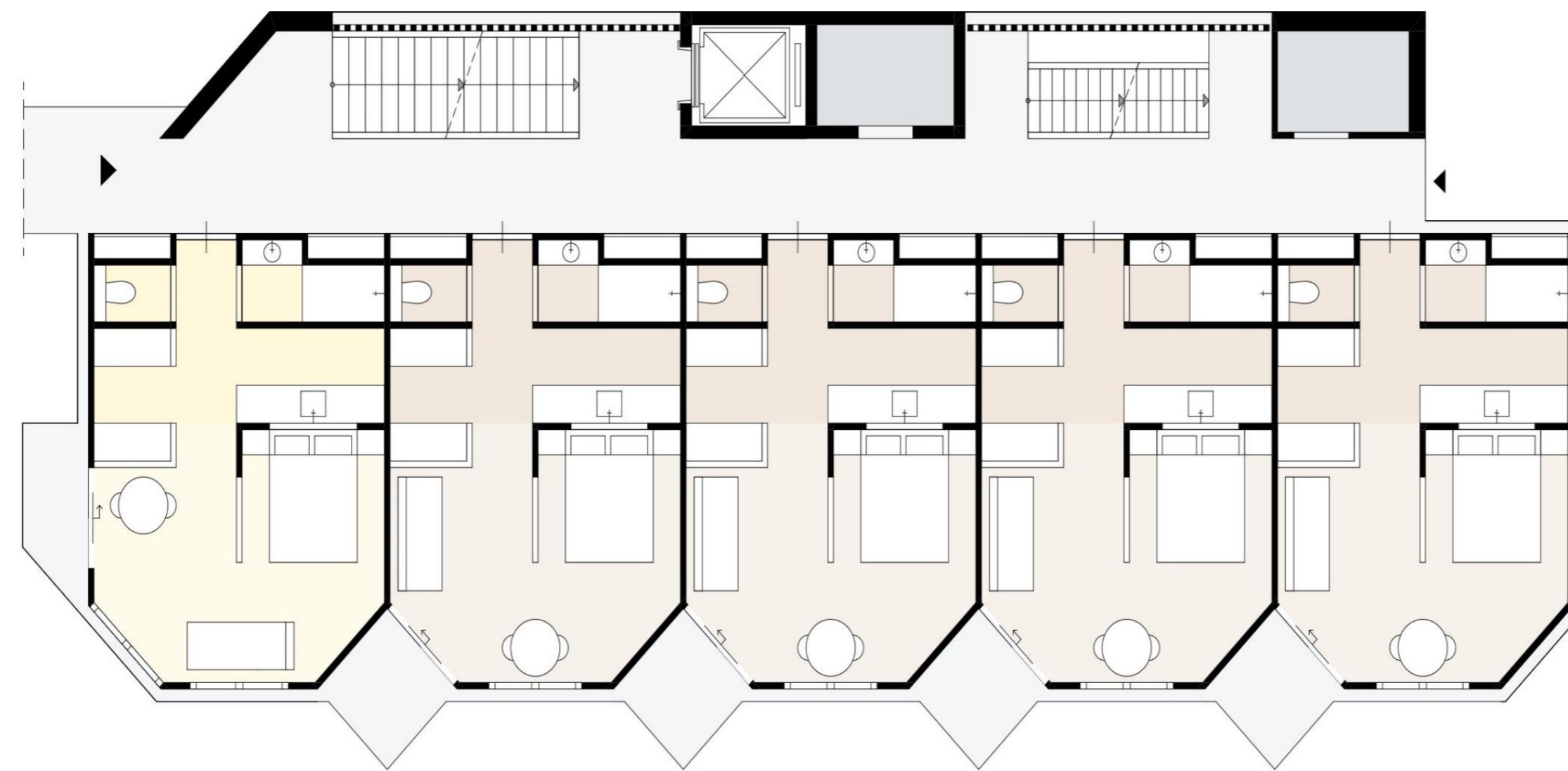
G301

G
BUILDING
FLOOR 3



56





G405

G404

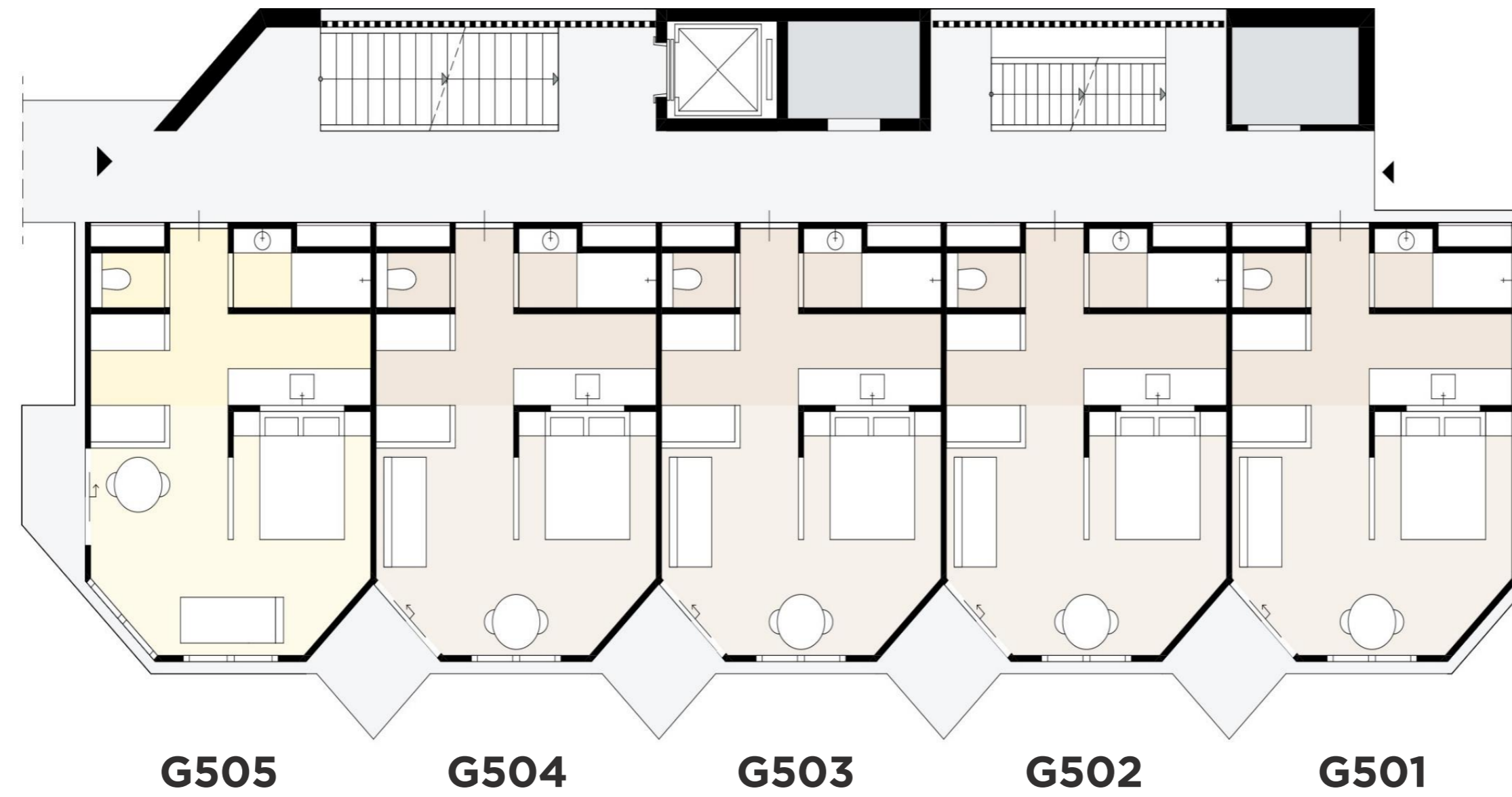
G403

G402

G401

G
BUILDING
FLOOR 4



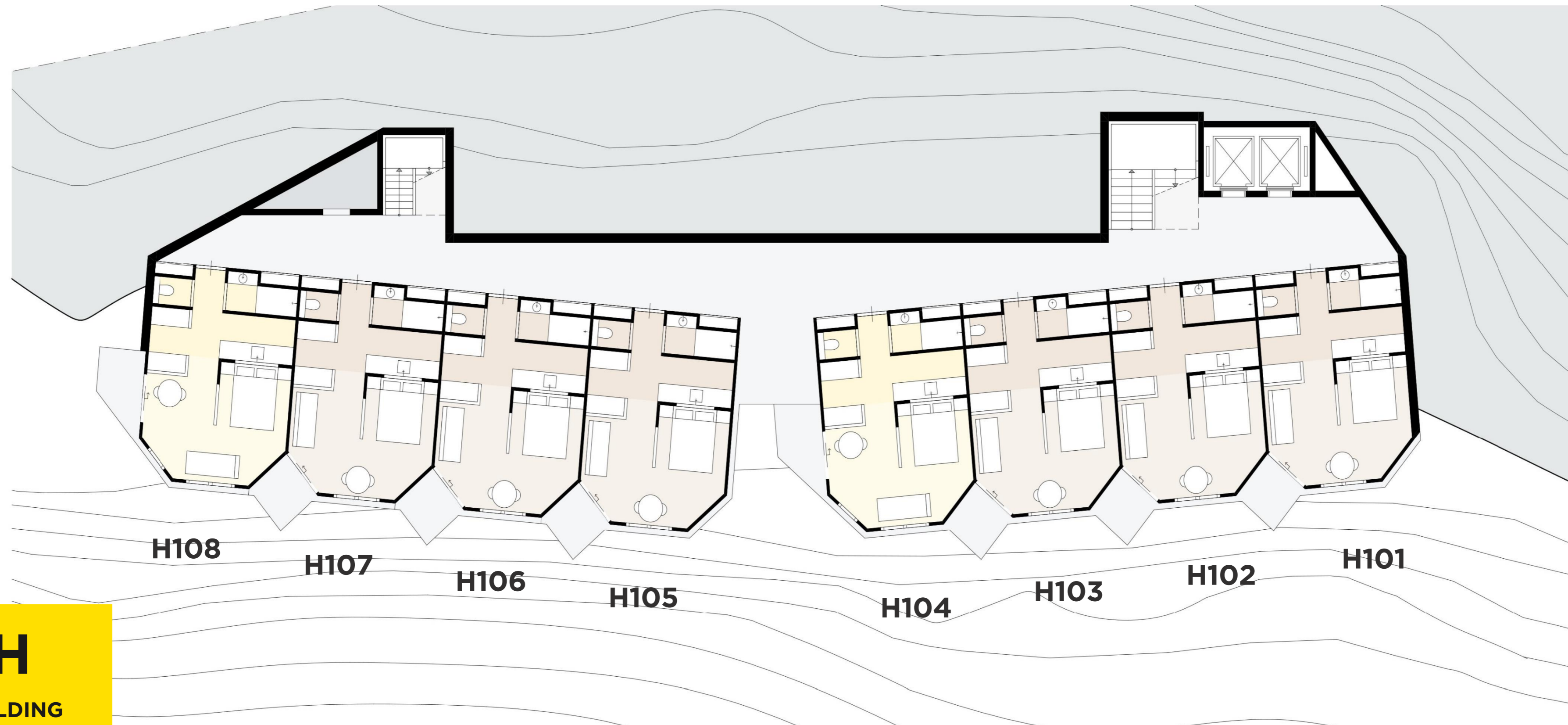


G
BUILDING
FLOOR 5



58





H
BUILDING
FLOOR 1



59





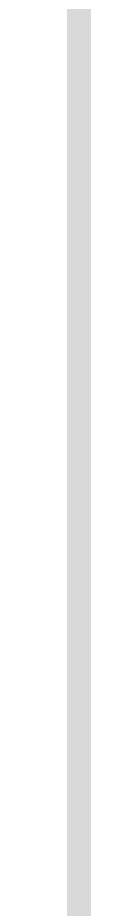
H
BUILDING
FLOOR 2

60



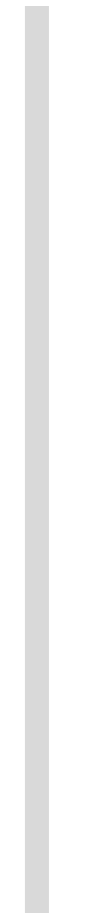


H
BUILDING
FLOOR 3





H
BUILDING
FLOOR 4

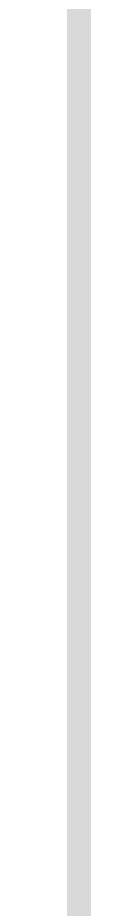


62





H
BUILDING
FLOOR 5





PHENOMENON. CONDOMINIUM WITH SEA VIEW IN THE KATA AREA

[Main characteristics of the project](#) | [Infrastructure](#) | [Advantages of the location](#) | [Available apartments](#)