



# Building 1, 2nd floor



**EXPLICATION OF APARTMENTS BUILDING 1, 2 FLOOR:**

Type 1a , 21 pcs.  
 Type 2a , 1 pcs.  
 Type 3a , 1 pcs.

**TOTAL BY FLOOR:**

Studios , 21 pcs.  
 1, room , 1 pcs.  
 2, room , 1 pcs.

Total , 23 pcs.

Total floor area: 1203.85 m<sup>2</sup>  
 Total apartment area: 791.18 m<sup>2</sup>  
 Total balconies area: 198.37 m<sup>2</sup>  
 Total apartment and balconies area: 945,4 m<sup>2</sup>



# Building 1, 3rd floor



**EXPLICATION OF APARTMENTS BUILDING 1, 3rd FLOOR:**

Type 1a , 22 pcs.  
 Type 2a , 1 pcs.  
 Type 3b , 1 pcs.

**TOTAL BY FLOOR:**

Studios , 22 pcs.  
 1 , room , 1 pcs.  
 2 , room , 1 pcs.

Total , 24 pcs.

Total floor area: 1258.52 m<sup>2</sup>  
 Total apartment area: 789.81 m<sup>2</sup>  
 Total balconies area: 257.48 m<sup>2</sup>  
 Total apartment and balconies area: 1047.29 m<sup>2</sup>



# Building 1, 4th floor



### EXPLANATION OF APARTMENTS BUILDING 1, 4 FLOOR:

- Type 1a , 8 pcs.
- Type 1a\_1 , 1 pcs.
- Type 1c , 1 pcs.
- Type 2c , 1 , 2 pcs.
- Type 2c , 2 , 1 pcs.
- Type 2d , 1 pcs.
- Type 3c\_1 , 1 pcs.
- Type 3d , 1 pcs.
- Type 3e , 1 pcs.

### TOTAL BY FLOOR:

- Studios , 10 pcs.
- 1 , room , 4 pcs.
- 2 , room , 3 pcs.
- Total , 17 pcs.

Total floor area: 1263.61 m<sup>2</sup>  
 Total apartment area: 796.41 m<sup>2</sup>  
 Total balconies area: 262.57 m<sup>2</sup>  
 Total apartment and balconies area: 1058.98 m<sup>2</sup>



EXPLICATION OF APARTMENTS BUILDING 1, FLOOR 5:

- Type 1a , 8 pcs.
- Type 2c\_1 , 3 pcs.
- Type 2c\_2 , 1 pcs.
- Type 2d , 1 pcs.
- Type 3f\_1 , 1 pcs.
- Type 3f\_2 , 1 pcs.
- Type 3g\_1 , 1 pcs.

TOTAL BY FLOOR:

- Studios , 8 pcs.
- 1 , room , 5 pcs.
- 2 , room , 3 pcs.
- Total , 16 pcs.

Total floor area: 1258.52 m<sup>2</sup>  
 Total apartment area: 796.65 m<sup>2</sup>  
 Total balconies area: 257.48 m<sup>2</sup>  
 Total apartment and balconies area: 1054.13 m<sup>2</sup>



# Building 1, 6th floor



### EXPLICATION OF APARTMENTS BUILDING 1, FLOOR 6:

- Type 1a , 6 pcs.
- Type 2b , 1 pcs.
- Type 2c\_1 , 3 pcs.
- Type 2c\_2 , 4 pcs.
- Type 3g\_2 , 1 pcs.
- Type 3h\_1 , 1 pcs.

### TOTAL BY FLOOR:

- Studios , 6 pcs.
- 1 , room , 8 pcs.
- 2 , room , 2 pcs.
- Total , 16 pcs.

Total floor area: 1263.61 m<sup>2</sup>  
 Total apartment area: 796.15 m<sup>2</sup>  
 Total balconies area: 262.57 m<sup>2</sup>  
 Total apartment and balconies area: 1058.72 m<sup>2</sup>



# Building 1, 7th floor



### EXPLICATION OF APARTMENTS BUILDING 1, FLOOR 7:

Type 1a , 2 pcs.  
 Type 2c , 1 , 4 pcs.  
 Type 2c , 2 , 1 pcs.  
 Type 2g , 1 pcs.  
 Type 3c 1 , 1 pcs.  
 Type 3c 2 , 2 pcs.  
 Type 3e , 1 pcs.  
 Type 3f 3 , 1 pcs.

### TOTAL BY FLOOR:

Studios , 2 pcs.  
 1 , room , 6 pcs.  
 2 , room , 5 pcs.  
 Total , 13 pcs.

Total floor area: 1258.52 m<sup>2</sup>  
 Total apartment area: 797.79 m<sup>2</sup>  
 Total balconies area: 257.48 m<sup>2</sup>  
 Total apartment and balconies area: 1055.27 m<sup>2</sup>



# Building 2, 2nd floor



**EXPLANATION OF APARTMENTS BUILDING 2, 2nd FLOOR:**

Type 1a , 15 pcs.  
 Type 2c\_1 , 2 pcs.  
 Type 2c\_2 , 1 pcs.  
 Type 3f\_1 , 1 pcs.  
 Type 4a , 1 pcs.

**TOTAL BY FLOOR:**

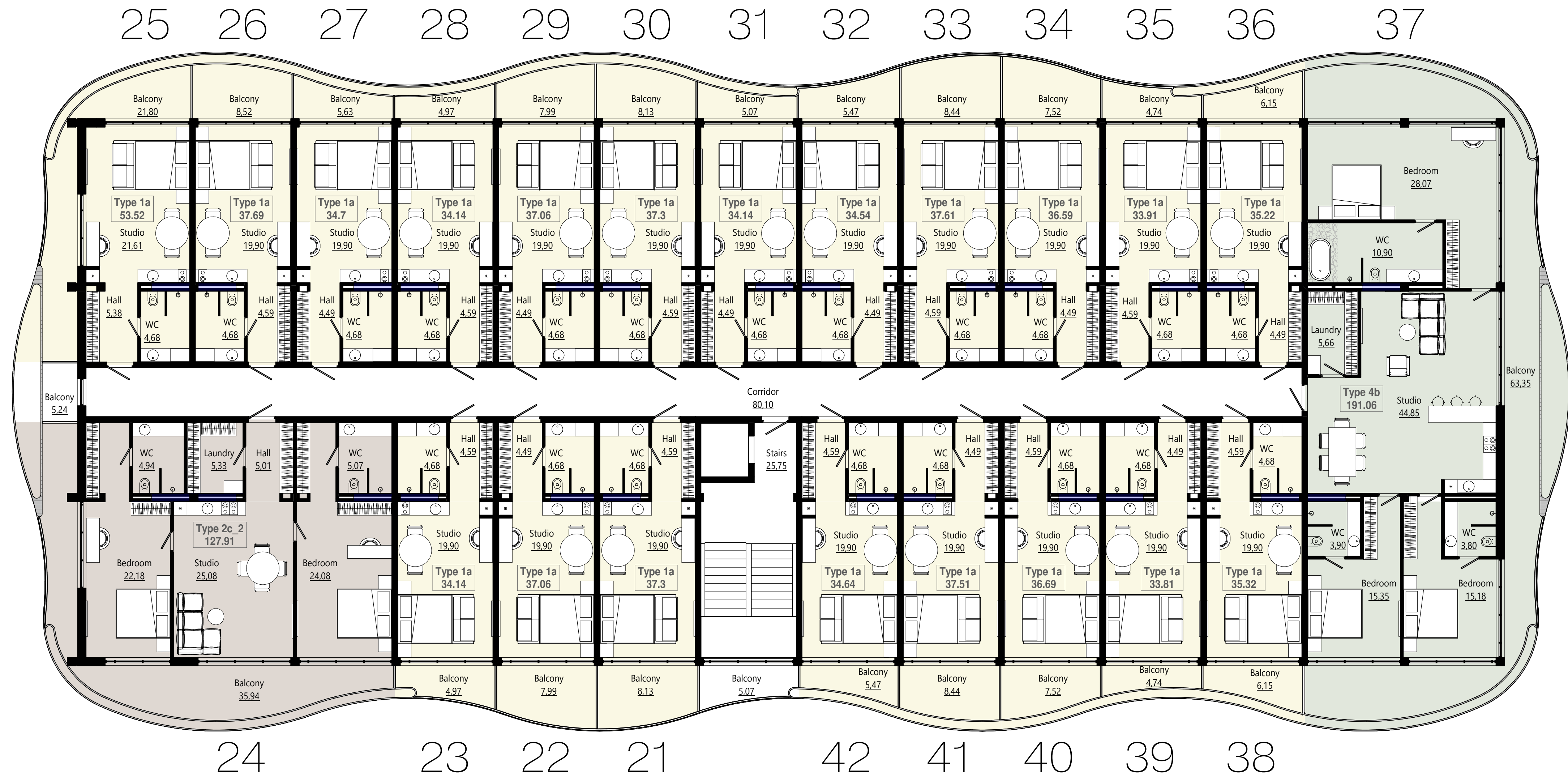
Studios , 15 pcs.  
 1 , room , 3 pcs.  
 3 , room , 1 pcs.  
 4 , room , 1 pcs.

Total , 20

Total floor area: 1217.44 m<sup>2</sup>  
 Total apartment area: 807.96 m<sup>2</sup>  
 Total balconies area: 216.40 m<sup>2</sup>  
 Total apartment and balconies area: 1024.36 m<sup>2</sup>



# Building 2, 3rd floor



### EXPLANATION OF APARTMENTS BUILDING 2, 3rd FLOOR:

Type 1a , 20 pcs.  
 Type 2c\_2 , 1 pcs.  
 Type 4b , 1 pcs.

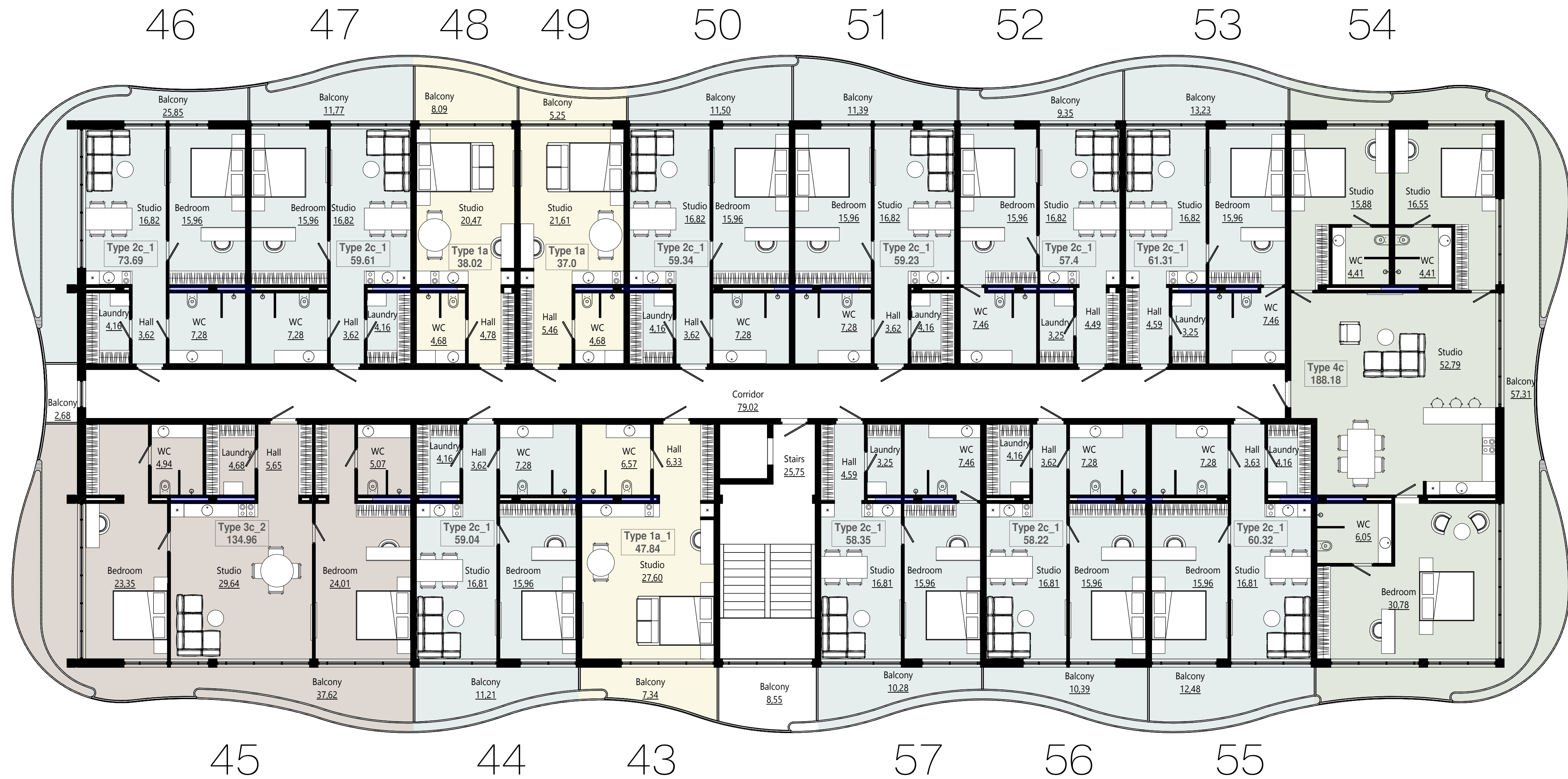
### TOTAL BY FLOOR:

Studios , 20 pcs.  
 1 , room , 1 pcs.  
 3 , room , 1 pcs.

Total , 22

Total floor area: 1258.52 m<sup>2</sup>  
 Total apartment area: 804.73 m<sup>2</sup>  
 Total balconies area: 257.48 m<sup>2</sup>  
 Total apartment and balconies area: 1062.21 m<sup>2</sup>





EXPLANATION OF APARTMENTS BUILDING 2, 4th FLOOR:

Type 1a , 2 pcs.  
 Type 1a\_1 , 1 pcs.  
 Type 2c\_1 , 10 pcs.  
 Type 3c\_2 , 1 pcs.  
 Type 4c , 1 pcs.

TOTAL BY FLOOR:

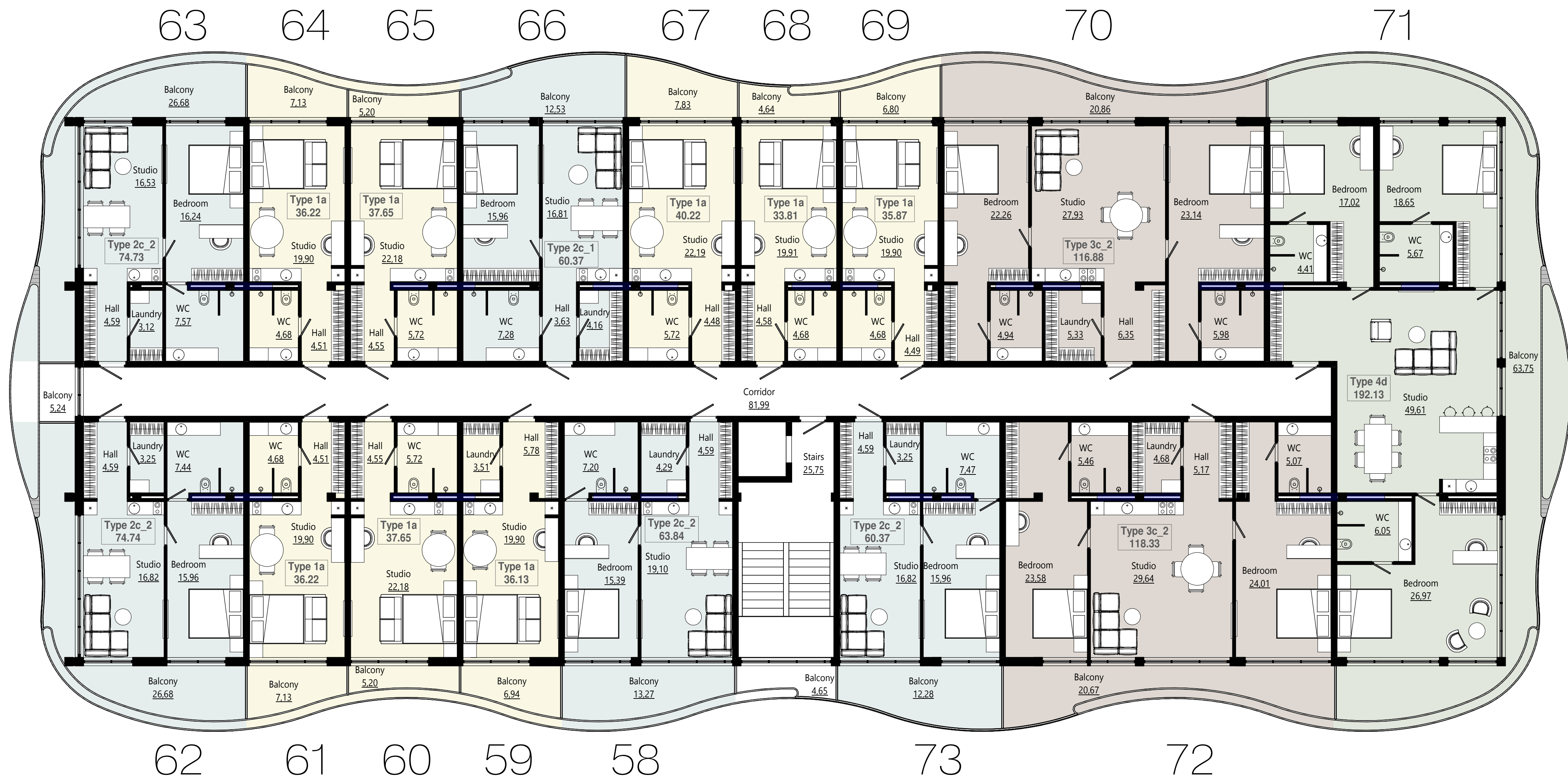
Studios , 3 pcs.  
 1, room , 10 pcs.  
 2, room , 1 pcs.  
 3, room , 1 pcs.

Total , 15

Total floor area: 1263.61 m<sup>2</sup>  
 Total apartment area: 808.96 m<sup>2</sup>  
 Total balconies area: 254.30 m<sup>2</sup>  
 Total apartment and balconies area: 1063.26 m<sup>2</sup>



# Building 2, 5th floor



### EXPLICATION OF APARTMENTS BUILDING 2, 5th FLOOR:

Type 1a , 7 pcs.  
 Type 2c\_1 , 1 pcs.  
 Type 2c\_2 , 4 pcs.  
 Type 3c\_2 , 2 pcs.  
 Type 4d , 1 pcs.

### TOTAL BY FLOOR:

Studios , 7 pcs.  
 1 , room , 5 pcs.  
 2 , room , 2 pcs.  
 3 , room , 1 pcs.  
 Total , 15

Total floor area: 1258.52 m<sup>2</sup>  
 Total apartment area: 807.59 m<sup>2</sup>  
 Total balconies area: 257.48 m<sup>2</sup>  
 Total apartment and balconies area: 1065.07 m<sup>2</sup>



EXPLICATION OF APARTMENTS BUILDING 2, 6th FLOOR:

- Type 1a , 6 pcs.
- Type 2c\_2 , 3 pcs.
- Type 3c\_1 , 1 pcs.
- Type 3c\_2 , 2 pcs.
- Type 3e , 1 pcs.
- Type 4d\_1 , 1 pcs.

TOTAL BY FLOOR:

- Studios , 6 pcs.
- 1 , room , 3 pcs.
- 2 , room , 4 pcs.
- 3 , room , 1 pcs.
- Total , 14

Total floor area: 1263.61 m<sup>2</sup>  
 Total apartment area: 809.29 m<sup>2</sup>  
 Total balconies area: 254.8 m<sup>2</sup>  
 Total apartment and balconies area: 1064.09 m<sup>2</sup>



EXPLICATION OF APARTMENTS BUILDING 2, 7th FLOOR:

Type 1a , 7 pcs.  
 Type 2c\_1 , 1 pcs.  
 Type 2c\_2 , 3 pcs.  
 Type 3c\_1 , 1 pcs.  
 Type 3c\_2 , 2 pcs.  
 Type 4e , 1 pcs.

TOTAL BY FLOOR:

Studios , 7 pcs.  
 1 , room , 4 pcs.  
 2 , room , 3 pcs.  
 3 , room , 1 pcs.  
 Total , 15

Total floor area: 1258.52 m<sup>2</sup>  
 Total apartment area: 805.83 m<sup>2</sup>  
 Total balconies area: 257.48 m<sup>2</sup>  
 Total apartment and balconies area: 1063.31 m<sup>2</sup>



EXPLICATION OF APARTMENTS BUILDING 2, 8th FLOOR:

Type 1a , 9 pcs.  
 Type 1a\_1 , 1 pcs.  
 Type 2c\_1 , 1 pcs.  
 Type 2c\_2 , 3 pcs.  
 Type 3c\_1 , 1 pcs.  
 Type 3c\_2 , 1 pcs.  
 Type 4f , 1 pcs.

TOTAL BY FLOOR:

Studios , 10 pcs.  
 1 , room , 4 pcs.  
 2 , room , 2 pcs.  
 3 , room , 1 pcs.  
 Total , 17

Total floor area: 1263.61 m<sup>2</sup>  
 Total apartment area: 807.72 m<sup>2</sup>  
 Total balconies area: 254.71 m<sup>2</sup>  
 Total apartment and balconies area: 1062.43 m<sup>2</sup>